

Part D

Evaluative Reports of the Departments

Profile of Bengali Department



Teachers of Bengali Department	Luminaries of Bengali Literature
--------------------------------	----------------------------------

1.	Name of the department	BENGALI
2.	Year of Establishment	1956
3.	Names of Programmes / Courses offered (UG, PG, M.Phil., Ph.D., Integrated Masters; Integrated Ph.D., etc.)	UG
4.	Names of interdisciplinary courses and the department/units involved	NIL
5.	Annual/ semester/choice based credit system (programme wise)	ANNUAL SYSTEM
6.	Participation of the department in the courses offered by other departments	NOT APPLICABLE
7.	Courses in collaboration with other universities, industries, foreign institutions, etc.	NOT APPLICABLE
8.	Details of courses/programmes discontinued (if any) with reasons	NOT APPLICABLE
9.	Number of Teaching posts	
Category		Filled
Professor*		—
Associate Professor**		—
Assistant Professor		4

*There is no post of Professor in Grant-In-Aid colleges

**Post of Assistant Professor is temporarily up graded to the Post of Associate Professor under Career Advancement Scheme (CAS).

10.	Faculty profile with name, qualification, designation, specialization, (D.Sc./D.Litt. Ph.D. / M. Phil. etc.,)
-----	---

Name	Qualification	Designation	Specialization	No. of Years of Experience	No. of Ph.D Students Guided in last 4 years
MOUSUMI BANERJEE SAHA	M.A., PH.D.	ASSOCIATE PROFESSOR	Humorous Short Stories	20	NIL
AMITABHA ROY	M.A., PH.D.	ASSOCIATE PROFESSOR	Drama	19	NIL
DOLA DEBNATH	M.A., PH.D.	ASSOCIATE PROFESSOR	Women in Bengali Literature	19	NIL
SARMISTHA SARKAR	M.A., PH.D.	ASSISTANT PROFESSOR	Nonsense Literature & Literature of Rabindranath	14	NIL
SUMITA KARMAKAR	M.A.	*PTT	Linguistics	5	NIL

*Government Approved Part Time Teacher

11.	List of senior visiting faculty					NOT APPLICABLE	
12.	Percentage of lectures delivered and practical classes handled (programme wise) by temporary faculty					NIL	
13.	Student-teacher ratio (programme-wise)					50.25	
14.	Number of Academic Support Staff (technical) and administrative staff; sanctioned and filled					Support Staff: 0 Administrative Staff: 0	
15.	Qualification of teaching faculty with	D.Sc	D.Litt	Ph.D	M.Phil	PG	
		0	0	4	0	0	
16.	Number of faculty with ongoing projects from	National Funding Agency		International Funding Agency			
		Grants received		Grants Received			
		NIL		NIL			
17.	Departmental projects funded by DST-FIST;UGC,DBT,ICSSR etc, and total grants received				NIL		
18.	Research Centre/facility recognized by the University					NOT APPLICABLE	

19.	Publications: Publication per faculty
-----	---------------------------------------

NAMES OF THE FACULTY MEMBERS	MOUSUMI BANERJEE SAHA	AMITABHA ROY	DOLA DEBNATH	SARMISTHA SARKAR	SUMITA KARMAKAR		
Number of papers published in peer reviewed journals (national/International) by faculty and students	—	—	—	—	—		
Number of publications listed in International Database (For Eg: Web of Science, Scopus, Humanities International Complete, Dare Database - International Social Sciences Directory, EBSCO host, etc.)	—	—	—	—	—		
Monographs	—	—	—	—	—		
Chapter in Books	—	—	—	2	—		
Books Edited	—	—	2	—	—		
Books with ISBN/ISSN numbers with details of publishers	—	—	—	—	—		
Citation Index	—	—	—	—	—		
SNIP	—	—	—	—	—		
SJR	—	—	—	—	—		
Impact Factor	—	—	—	—	—		
hi-index	—	—	—	—	—		

20.	Areas of consultancy and income generated	Not Applicable
-----	---	----------------

21.	Faculty as members in	National Committees	International Committees	Editorial Boards
		NIL	NIL	NIL
22.	Student Projects			
	Percentage of students who have done in-house projects including inter departmental/programme		NIL	
	Percentage of students placed for projects in organizations outside the institution i.e.in Research laboratories/Industry/ other agencies			

23.	Awards/recognitions received by the faculty and students	<ul style="list-style-type: none"> • Dr. Amitabha Roy has recently been nominated by the University of Calcutta to act as members of the Governing Body in two Govt. Aided colleges • Dr. Amitabha Roy acted as 'Observer' duly authorized by Government of West Bengal in connection with Teachers' Eligibility Test Examination, 2015 and 'SET' examination, 2015 conducted by the West Bengal College Service Commission • Dr. Amitabha Roy actively participated in 'National Achievement Survey for Class X' organized by Board of Secondary Education, Government of West Bengal
-----	--	---

24.	List of eminent academicians and scientists/visitors to the department	NIL
-----	--	-----

25.	Seminars/Conferences/Workshops organized & the source of funding	
(a)	National	One UGC-sponsored National Seminar organized in 2011 in collaboration with Vivekananda College, Kolkata
(b)	International	NIL

26.	Student profile (programme/course wise)						
	Name of the Course/Programme (refer question No. 4)	Applications received		Selected	Enrolled		Pass Percentage
					*M	*F	
	Undergraduate (Honours)	2011-12	943	32	11	21	98.21
		2012-13	921	48	10	36	98.36
		2013-14	533	86	14	67	100.00
		2014-15	497	84	46	25	89.29
	Undergraduate (Pass)	College does not keep such records at ‘Pass’ level					
	Postgraduate	Not on offer					

*M= Male, *F=Female

27.	Diversity of Students			
	Name of the Courses	% of students from the same state	% of students from the other state	% of the students from abroad
	Undergraduate (Pass)	100%	NIL	NIL
	Undergraduate (Honours)	100%	NIL	NIL
	Postgraduate	100%	NIL	NIL

28.	How many students have cleared national and state competitive examinations such as NET,SLET,GATE, Civil Services, Defence Services, etc. [verifiable data not available]
-----	--

29.	Student progression [verifiable data not available]
-----	---

Student progression	Against % enrolled (No verifiable data available)
UG to PG	
PG to M.Phil.	
PG to Ph.D.	
Ph.D. to Post-Doctoral	
Employed	
— Campus selection	
— Other than campus recruitment	
Entrepreneurship/Self-employment	

30.	Details of Infrastructural Facilities		
	Library	Departmental Library contains 410 books for the use of teachers and students	
	Internet facilities for Staff & Students	Internet facility available in the Library with Wi-Fi connectivity	
	Classrooms with ICT Facilities	One departmental laptop computer and one LCD projector (on sharing basis). Photocopier machine is available in the Central Library.	
	Laboratories	Not Applicable	
31.	Number of students receiving financial assistance from college, university, government or other agencies	College (Students' Aid Fund)	26
		Government(SC/ST/OBC/Minority Scholarships)	10
2.	Details on the student enrichment programmes (special lectures / workshops/seminar) with external experts	Nil	
33.	Teaching methods adopted to improve student learning	<ul style="list-style-type: none"> Conventional method of teaching (Class lecture, interaction, board works etc) Occasional use of LCD Projector 	
34.	Participation in Institutional Social Responsibility (ISR) and Extension activities	<ul style="list-style-type: none"> Students are encouraged in participating in Blood Donation Camps organized by Students' Union Students are encouraged to participate in NCC/NSS activity of the college. The students of the department of Bengali organizes cultural programmes of social importance such as Teachers' Day Celebration, Rabindra Jayanti (birth day celebration of Rabindranath Tagore) etc. 	

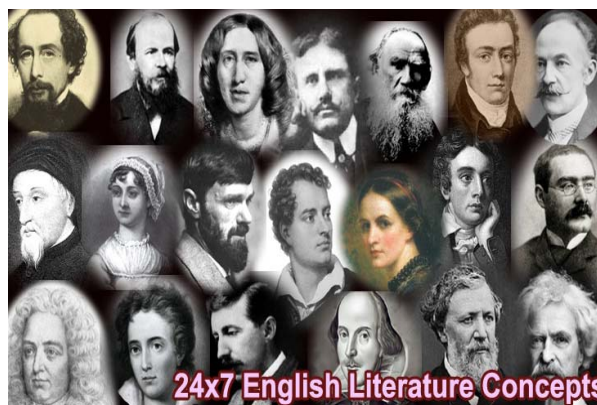


35.	<p>SWOC analysis of the department and Future Plans</p> <p><u>Strength</u></p> <ul style="list-style-type: none"> • All sanctioned teaching posts are filled • All regular teachers hold Ph.D. degree • Departmental teaching experience at the Honours level for about two decades • Gradual increase of demand for admission • Teachers' active involvements in multiple activities of the college, both Curricular and Co-curricular • Students' success in university examinations is recognized by the department by distributing prizes • Students are continuously encouraged to contribute write ups to be published on the departmental wall magazine • • Students are encouraged to be actively involved in different cultural activities round the year <p><u>Weakness</u></p> <ul style="list-style-type: none"> • Very few or no research activity at the departmental level beyond doctoral level • No Academic Seminar/Symposia held after the National Seminar in 2011 • Less emphasis on curricular enrichment by arranging invited talks/seminar lectures <p><u>Opportunity</u></p> <ul style="list-style-type: none"> • Possibilities of re-introduction of Departmental Magazine may be explored • Departmental Seminars may be arranged in frequent intervals • More research options is seen on the card <p><u>Challenges</u></p> <ul style="list-style-type: none"> • Striking a balance between the work schedule related to Examination and teaching • Maintaining records of the individual and collective activities of the department in the face of non-admissibility of appropriate support staff
-----	--

Profile of English Department



Teachers of the Department of English



Masters of English Literature down the ages

1.	Name of the department	ENGLISH
2.	Year of Establishment	1956
3.	Names of Programmes / Courses offered (UG, PG, M.Phil., Ph.D., Integrated Masters; Integrated Ph.D., etc.)	UG
4.	Names of interdisciplinary courses and the department/units involved	ANNUAL SYSTEM
5.	Annual/ semester/choice based credit system (programme wise)	NOT APPLICABLE
6.	Participation of the department in the courses offered by other departments	NOT APPLICABLE
7.	Courses in collaboration with other universities, industries, foreign institutions, etc.	NOT APPLICABLE
8.	Details of courses/programmes discontinued (if any) with reasons	NOT APPLICABLE

9.	Number of Teaching posts
----	--------------------------

Category	Sanctioned	Filled
Professor*	—	—
Associate Professor**	—	—
Assistant Professor	6	5

*There is no post of Professor in Grant-In-Aid colleges

**Post of Assistant Professor is temporarily up graded to the Post of Associate Professor under Career Advancement Scheme (CAS).

10.	Faculty profile with name, qualification, designation, specialization, (D.Sc./D.Litt. Ph.D. / M. Phil. etc.,)
-----	---

Name	Qualification	Designation	Specialization	No. of Years of Experience	No. of Ph.D. Students Guided in last 4 years
SATABDI SAHA (RETD. In April, 2015)	M.A.	ASSOCIATE PROFESSOR	Modern European Classics	26	NIL
KASTURI DEB CHAUDHURY	M.A.	ASSOCIATE PROFESSOR	Greek Tragedy	27	NIL
MRINAL CHAKRABORTY	M.A.	ASSOCIATE PROFESSOR	Greek Tragedy	24	NIL
ANURADHA GHOSH	M.A.	ASSOCIATE PROFESSOR	Art, Translation etc.	19	NIL
JAYSREE ROY CHAUDHURY	M.A.	ASSOCIATE PROFESSOR	American Literature	29	NIL
SUMANA MANIK GIRI	M.A., PH.D.	ASSOCIATE PROFESSOR	Utopian Literature & Philosophy	16	NIL

11.	List of senior visiting faculty					NOT APPLICABLE		
12.	Percentage of lectures delivered and practical classes handled (programme wise)by temporary faculty					Nil		
13.	Student-teacher ratio (programme-wise)					39.20		
14.	Number of Academic Support Staff (technical) and administrative staff; sanctioned and filled					Support Staff: 0 Administrative Staff: 0		
15.	Qualification of teaching faculty with	D.Sc	D.Litt	Ph.D	M.Phil	PG		
		0	0	1	1	3		
16.	Number of faculty with ongoing projects from	National Funding Agency		International Funding Agency				
		Grants received		Grants Received				
		NIL		NIL				
17.	Departmental projects funded by DST-FIST;UGC,DBT,ICSSR etc, and total grants received					NIL		
18.	Research Centre/facility recognized by the University					Nil		

19.	Publications: Publication per faculty
-----	---------------------------------------

NAMES OF THE FACULTY MEMBERS	SATABDI SAHA (RETD.)	KASTURI DEB CHAUDHURY	MRINAL CHAKRABORTY	ANURADHA GHOSH	JAYSREE ROY CHAUDHURY	SUMANA MANIK GIRI	
—Number of papers published in peer reviewed journals (national/International) by faculty and students	—	—	—	—	—	—	
Number of publications listed in International Database (For Eg: Web of Science, Scopus, Humanities International Complete, Dare Database - International Social Sciences Directory, EBSCO host, etc.)	—	—	—	—	—	—	
Monographs	—	—	—	—	—	—	
Chapter in Books—	—	—	—	—	—	—	
Books Edited	—	—	—	—	—	—	
Books with ISBN/ISSN numbers with details of publishers	—	—	—	—	—	—	
Citation Index	—	—	—	—	—	—	
SNIP	—	—	—	—	—	—	
SJR	—	—	—	—	—	—	
Impact Factor	—	—	—	—	—	—	
hi-index	—	—	—	—	—	—	

20.	Areas of consultancy and income generated	Not Applicable
-----	---	----------------

21.	Faculty as members in	National Committees	International Committees	Editorial Boards
		NIL	NIL	NIL
22.	Student Projects			
	Percentage of students who have done in-house projects including inter departmental/programme			
	Percentage of students placed for projects in organizations outside the institution i.e.in Research laboratories/Industry/ other agencies			Not Applicable

23.	Awards/recognitions received by the faculty and students	<ul style="list-style-type: none"> • Prof. Anuradha Ghosh acted as Resource Person in Refresher Course in English organized by Academic Staff College, North Orissa University, 2004 • Prof. Anuradha Ghosh acted as Resource person in Orientation programme organized by Academic Staff College, Calcutta University, 2008 & 2009 • Prof. Anuradha Ghosh is presently acting as Convener of English at Expert Committee on School Education, Government of West Bengal • Prof. Anuradha Ghosh was invited to 'National Poetry Festival', Dhaka, Bangladesh as an Indian delegate, 2011
-----	--	--



Smt. Anuradha Ghosh performing on the occasion of 150th birth anniversary of Rabindranath Tagore in London



Smt. Anuradha Ghosh being greeted in National Poetry Festival at Dhaka, Bangladesh



Smt. Anuradha Ghosh in Dhaka, Bangladesh on the occasion of National Poetry Festival, 2011

24.	List of eminent academicians and scientists/visitors to the department	NIL
-----	--	-----

25.	Seminars/Conferences/Workshops organized & the source of funding	
(a)	National	NIL
(b)	International	NIL

26.	Student profile (programme/course wise)						
	Name of the Course/Programme (refer question No. 4)	Applications received		Selected	Enrolled		Pass Percentage
					*M	*F	
	Undergraduate (Honours)	2011-12	1399	51	21	30	95.45
		2012-13	1554	49	24	23	96.97
		2013-14	1219	71	30	33	82.61
		2014-15	952	87	35	36	100.00
	Undergraduate (Pass)	College does not keep such records at 'Pass' level					
	Postgraduate	Not on offer					

*M= Male, *F=Female

27.	Diversity of Students			
	Name of the Courses	% of students from the same state	% of students from the other state	% of the students from abroad
	Undergraduate (Pass)	100%	NIL	NIL
	Undergraduate (Honours)	100%	NIL	NIL
	Postgraduate	100%	NIL	NIL

28.	How many students have cleared national and state competitive examinations such as NET,SLET,GATE, Civil Services, Defence Services, etc. [verifiable data not available]
-----	--

29.	Student progression [verifiable data not available]
-----	---

Student progression	Against % enrolled (verifiable data not available)
UG to PG	
PG to M.Phil.	
PG to Ph.D.	
Ph.D. to Post-Doctoral	
Employed	
— Campus selection	
— Other than campus recruitment	
Entrepreneurship/Self-employment	

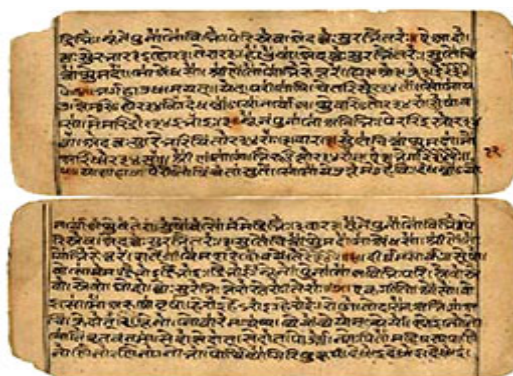
30.	Details of Infrastructural Facilities	
	Library	Departmental Library contains some 1184 books for the use of teachers and students
	Internet facilities for Staff & Students	Internet facility available in the Library with Wi-Fi connectivity
	Classrooms with ICT Facilities	One departmental laptop computer and one LCD projector (on sharing basis). Photocopier machine is available in the Central Library.
	Laboratories	Not Applicable

31.	Number of students receiving financial assistance from college, university, government or other agencies	College (Students' Aid Fund)	04
		Government(SC/ST/OBC/Minority Scholarships)	03
32.	Details on student enrichment programmes (special lectures / workshops/seminar) with external experts	NIL	
33.	Teaching methods adopted to improve student learning	<ul style="list-style-type: none">• Conventional method of teaching (Class lecture, interaction, board works etc)• Occasional use of LCD Projector	
34	Participation in Institutional Social Responsibility (ISR) and Extension activities	<ul style="list-style-type: none">• Students are encouraged in participating in Blood Donation Camps organized by Students' Union• Students are encouraged to participate in NCC/NSS activity of the college.	
35.	SWOC analysis of the department and Future plans		
	<u>Strength</u> <ul style="list-style-type: none">• All sanctioned teaching posts are filled• Departmental teaching experience at the Honours level for more than 50 years• Gradual increase of demand for admission• Teachers' active involvements in multiple activities of the college, both Curricular and Co-curricular <u>Weakness</u> <ul style="list-style-type: none">• Only one teacher holds Ph.D. degree• Very few or no research activity at the departmental level• No Academic Seminar/Symposia held for over a decade• Less emphasis on curricular enrichment by arranging invited talks/seminar lectures <u>Opportunity</u> <ul style="list-style-type: none">• Experience of one teacher in 'Curricular Enrichment Programme' of the Government of West Bengal at the level of School Education may be translated into 'Curricular Enrichment' programme of the college• Possibilities of re-introduction of Departmental Magazine may be explored• Departmental Seminars may be arranged in frequent intervals• More research options is seen on the card <u>Challenges</u> <ul style="list-style-type: none">• Striking a balance between the work schedule related to Examination and teaching• Maintaining records of the individual and collective activities of the department in the face of non-admissibility of appropriate support staff		

Profile of the Sanskrit Department



Sanskrit class under progress



Vedas: the treasure of knowledge in Sanskrit

1.	Name of the department	SANSKRIT
2.	Year of Establishment	1956
3.	Names of Programmes / Courses offered (UG, PG, M.Phil., Ph.D., Integrated Masters; Integrated Ph.D., etc.)	UG
4.	Names of interdisciplinary courses and the department/units involved	ANNUAL SYSTEM
5.	Annual/ semester/choice based credit system (programme wise)	NOT APPLICABLE
6.	Participation of the department in the courses offered by other departments	NOT APPLICABLE
7.	Courses in collaboration with other universities, industries, foreign institutions, etc.	NOT APPLICABLE
8.	Details of courses/programmes discontinued (if any) with reasons	NOT APPLICABLE

9.	Number of Teaching posts
----	--------------------------

Category	Sanctioned	Filled
Professor*	—	—
Associate Professor**	—	—
Assistant Professor	1	1

*There is no post of Professor in Grant-In-Aid colleges

**Post of Assistant Professor is temporarily up graded to the Post of Associate Professor under Career Advancement Scheme (CAS).

10.	Faculty profile with name, qualification, designation, specialization, (D.Sc./D.Litt. Ph.D. / M. Phil. etc.,)
-----	---

Name	Qualification	Designation	Specialization	No. of Years of Experience	No. of Ph.D Students Guided in last 4 years
SIKHA SAHA (BHOWMICK)	M.A. (Double)	ASSOCIATE PROFESSOR	Kavya (Literature)	25	NIL

11.	List of senior visiting faculty					NOT APPLICABLE		
12.	Percentage of lectures delivered and practical classes handled (programme wise)by temporary faculty					Nil		
13.	Student-teacher ratio (programme-wise)					80.00		
14.	Number of Academic Support Staff (technical) and administrative staff; sanctioned and filled					Support Staff: 0 Administrative Staff: 0		
15.	Qualification of teaching faculty with	D.Sc	D.Litt	Ph.D	M.Phil	PG		
		0	0	0	0	1		
16.	Number of faculty with ongoing projects from	National Funding Agency		International Funding Agency				
		Grants received		Grants Received				
		NIL		NIL				
17.	Departmental projects funded by DST-FIST;UGC,DBT,ICSSR etc, and total grants received					NIL		
18.	Research Centre/facility recognized by the University					Not Applicable		

19.	Publications: Publication per faculty
-----	---------------------------------------

NAMES OF THE FACULTY MEMBERS	SIKHA BHOWMICK SAHA						
Number of papers published in peer reviewed journals (national/international) by faculty and students	—						
Number of publications listed in International Database (For Eg: Web of Science, Scopus, Humanities International Complete, Dare Database - International Social Sciences Directory, EBSCO host, etc.)	—						
Monographs	—						
Chapter in Books	—						
Books Edited	—						
Books with ISBN/ISSN numbers with details of publishers	—						
Citation Index	—						
SNIP	—						
SJR	—						
Impact Factor	—						
hi-index	—						

20.	Areas of consultancy and income generated	Not Applicable
-----	---	----------------

21.	Faculty as members in	National Committees	International Committees	Editorial Boards
		Nil	Nil	Nil

22.	Student Projects	
	Percentage of students who have done in-house projects including inter departmental/programme Percentage of students placed for projects in organizations outside the institution i.e.in Research laboratories/Industry/other agencies	Not Applicable

23.	Awards/recognitions received by the faculty and students	Nil
-----	--	-----

24.	List of eminent academicians and scientists/visitors to the department	Nil
-----	--	-----

25.	Seminars/Conferences/Workshops organized & the source of funding	
(a)	National	Nil
(b)	International	Nil

26.	Student profile (programme/course wise)					
	Name of the Course/Programme (refer question No. 4)	Applications received	Selected	Enrolled		Pass Percentage
				*M	*F	
	Undergraduate (Pass)	College does not keep such records at ‘Pass’ level				
	Undergraduate (Honours)	Not on offer				
	Postgraduate					

*M= Male, *F=Female

27.	Diversity of Students			
	Name of the Courses	% of students from the same state	% of students from the other state	% of the students from abroad
	Undergraduate (Pass)	100%	NIL	NIL
	Undergraduate (Honours)	100%	NIL	NIL
	Postgraduate	100%	NIL	NIL

28.	How many students have cleared national and state competitive examinations such as NET,SLET,GATE, Civil Services, Defence Services, etc. [verifiable data not available]	
-----	--	--

29.	Student progression	
-----	---------------------	--

Student progression	Against % enrolled (verifiable data not available)
UG to PG	
PG to M.Phil.	
PG to Ph.D.	
Ph.D. to Post-Doctoral	
Employed — Campus selection — Other than campus recruitment	
Entrepreneurship/Self-employment	

30.	Details of Infrastructural Facilities	
	Library	Not Applicable
	Internet facilities for Staff & Students	Internet facility available in the Library with Wi-Fi connectivity
	Classrooms with ICT Facilities	One departmental laptop computer and one LCD projector (on sharing basis). Photocopier machine is available in the Central Library.
	Laboratories	Not Applicable
31.	Number of students receiving financial assistance from college, university, government or other agencies	Data not available (Sanskrit is studied as an elective subject of B.A. General course only by a few students. College keeps record on the instant issue in a course wise fashion only)
32.	Details on student enrichment programmes (special lectures / workshops/seminar) with external experts	Nil
33.	Teaching methods adopted to improve student learning	Conventional method of teaching using chalk and talk & interactive discussion with the students
34.	Participation in Institutional Social Responsibility (ISR) and Extension activities	<ul style="list-style-type: none"> Students are encouraged in participating in Blood Donation Camps organized by Students' Union Students are encouraged to participate in NCC/NSS activity of the college.
35.	SWOC analysis of the department and Future plans	<p><u>Strength</u></p> <ul style="list-style-type: none"> The only teacher of the department possess a number of degrees and diploma in various subjects such as M.A. in two subjects, Masters Degree in Music (M.Muse.), Kavyatirtha, and B.Ed. & Hindi Ratna More than 50 years departmental experience of teaching Sanskrit at the undergraduate level <p><u>Weakness</u></p> <ul style="list-style-type: none"> Only one teacher in the department Teaching restricted to General level only Darth of students possibly due to very low job opportunity Very few or no research activity at the departmental level No Academic Seminar/Symposia held for a long time Less emphasis on curricular enrichment by arranging invited talks/seminar lectures <p><u>Opportunity</u></p> <ul style="list-style-type: none"> Possibilities of introduction of Departmental Magazine may be explored Departmental Seminars may be arranged in frequent intervals <p><u>Challenges</u></p> <ul style="list-style-type: none"> Retaining only few students available

Profile of History Department



Teachers of History are exchanging views



Spectacular facets of Indian History

1.	Name of the department	HISTORY
2.	Year of Establishment	1956
3.	Names of Programmes / Courses offered (UG, PG, M.Phil., Ph.D., Integrated Masters; Integrated Ph.D., etc.)	UG
4.	Names of interdisciplinary courses and the department/units involved	ANNUAL SYSTEM
5.	Annual/ semester/choice based credit system (programme wise)	NOT APPLICABLE
6.	Participation of the department in the courses offered by other departments	NOT APPLICABLE
7.	Courses in collaboration with other universities, industries, foreign institutions, etc.	NOT APPLICABLE
8.	Details of courses/programmes discontinued (if any) with reasons	NOT APPLICABLE

9.	Number of Teaching posts	
	Category	Sanctioned
	Professor*	—
	Associate Professor**	—
	Assistant Professor	4
		Filled
		—
		—
		4

*There is no post of Professor in Grant-In-Aid colleges

**Post of Assistant Professor is temporarily up graded to the Post of Associate Professor under Career Advancement Scheme (CAS).

10.	Faculty profile with name, qualification, designation, specialization, (D.Sc./D.Litt. Ph.D. / M. Phil. etc.,)
-----	---

Name	Qualification	Designation	Specialization	No. of Years of Experience	No. of Ph.D Students Guided in last 4 years
SUBHABRATA DATTA	M.A.	ASSOCIATE PROFESSOR	Economic History of India	28	NIL
SHIMA DUTTA	M.A., M.PHIL.	ASSOCIATE PROFESSOR	Socio-Cultural History of Bengal	23	NIL
SUDARSHANA CHAUDHURY	M.A., PH.D.	ASSOCIATE PROFESSOR	Ancient & Environmental History	16	NIL
MRINAL KANTI MALI	M.A., M.PHIL.	ASSISTANT PROFESSOR	Socio-religious History of Bengal	12	NIL
SAMYABRATA DUTTA	M.A.	*PTT	Modern India	05	NIL
TAMALI DASGUPTA	M.A.	*PTT	Economic History of India	05	NIL
IPSITA CHAKRABORTY	M.A.	*PTT	Social & Economic History of Medieval India	05	NIL

*Government Approved Part Time Teacher

11.	List of senior visiting faculty					Not Applicable	
12.	Percentage of lectures delivered and practical classes handled (programme wise)by temporary faculty					Nil	
13.	Student-teacher ratio (programme-wise)					39.00	
14.	Number of Academic Support Staff (technical) and administrative staff; sanctioned and filled					Support Staff: 0 Administrative Staff: 0	
15.	Qualification of teaching faculty with	D.Sc	D.Litt	Ph.D	M.Phil	PG	
		0	0	1	2	1	
16.	Number of faculty with ongoing projects from	National Funding Agency		International Funding Agency			
		Grants received		Grants Received			
		NIL		NIL			
17.	Departmental projects funded by DST-FIST;UGC,DBT,ICSSR etc, and total grants received				NIL		
18.	Research Cenre/facility recognized by the University				Not Applicable		

19.	Publications: Publication per faculty
-----	---------------------------------------

NAMES OF THE FACULTY MEMBERS	SUBHABRATA DATTA	SHIMA DUTTA	SUDARSHANA CHAUDHURY	MRINAL KANTI MALI	SAMYABRATA DUTTA	TAMALI DASGUPTA	IPSITA CHAKRABORTY
Number of papers published in peer reviewed journals (national/International) by faculty and students	—	—	4	1	—	—	—
Number of publications listed in International Database (For Eg: Web of Science, Scopus, Humanities International Complete, Dare Database - International Social Sciences Directory, EBSCO host, etc.)	—	—	—	—	—	—	—
Monographs	—	—	—	—	—	—	—
Chapter in Books	—	—	1	—	—	—	—
Books Edited	—	—	—	—	—	—	—
Books with ISBN/ISSN numbers with details of publishers	—	—	—	1	—	—	—
Citation Index	—	—	—	—	—	—	—
SNIP	—	—	—	—	—	—	—
SJR	—	—	—	—	—	—	—
Impact Factor	—	—	—	—	—	—	—
hi-index	—	—	—	—	—	—	—

20.	Areas of consultancy and income generated	Not Applicable
-----	---	----------------

21.	Faculty as members in	National Committees	International Committees	Editorial Boards
		NIL	NIL	NIL
22.	Student Projects			Not Applicable
	Percentage of students who have done in-house projects including inter departmental/programme Percentage of students placed for projects in organizations outside the institution i.e.in Research laboratories/Industry/ other agencies			

23.	Awards/recognitions received by the faculty and students	Nil
-----	--	-----

24.	List of eminent academicians and scientists/visitors to the department [Not Applicable]
-----	---

25.	Seminars/Conferences/Workshops organized & the source of funding	
(a)	National	One UGC-sponsored National Seminar organized in 2011 jointly with the department of Political Science and in collaboration with Institute of Asian Studies, Kolkata
(b)	International	Not Applicable

26.	Student profile (programme/course wise)						
	Name of the Course/Programme (refer question No. 4)	Applications received		Selected	Enrolled		Pass Percentage
					*M	*F	
	Undergraduate (Honours)	2011-12	624	42	22	20	97.22
		2012-13	612	60	16	43	100.00
		2013-14	226	57	23	32	100.00
		2014-15	221	56	19	32	88.24
	Undergraduate (Pass)	College does not keep such records at ‘Pass’ level					
	Postgraduate	Not on offer					

*M= Male, *F=Female

27.	Diversity of Students			
	Name of the Courses	% of students from the same state	% of students from the other state	% of the students from abroad
	Undergraduate (Pass)	100%	NIL	NIL
	Undergraduate (Honours)	100%	NIL	NIL
	Postgraduate	100%	NIL	NIL

28.	How many students have cleared national and state competitive examinations such as NET,SLET,GATE, Civil Services, Defence Services, etc. [verifiable data not available]
-----	--

29.	Student progression
-----	---------------------

Student progression	Against % enrolled (verifiable data not available)
UG to PG	
PG to M.Phil.	
PG to Ph.D.	
Ph.D. to Post-Doctoral	
Employed	
— Campus selection	
— Other than campus recruitment	
Entrepreneurship/Self-employment	

30.	Details of Infrastructural Facilities	
	Library	The Departmental Library has 127 books for the use of teachers and students
	Internet facilities for Staff & Students	Internet facility available in the Library with Wi-Fi connectivity

Classrooms with ICT Facilities	One departmental laptop computer and one LCD projector (on sharing basis). Photocopier machine is available in the Central Library.
Laboratories	Not Applicable

31.	Number of students receiving financial assistance from college, university, government or other agencies	College (Students' Aid Fund)	23
		Government(SC/ST/OBC/Minority Scholarships)	09

32.	Details on student enrichment programmes (special lectures / workshops/seminar) with external experts	Nil
-----	---	-----

33.	Teaching methods adopted to improve student learning	Conventional method of teaching using chalk and talk & interactive discussion with the students
-----	--	---

34	Participation in Institutional Social Responsibility (ISR) and Extension activities	<ul style="list-style-type: none"> Students are encouraged in participating in Blood Donation Camps organized by Students' Union Students are encouraged to participate in NCC/NSS activity of the college.
----	---	---

35.	SWOC analysis of the department and Future plans
	<p><u>Strength</u></p> <ul style="list-style-type: none"> All sanctioned teaching posts are filled Teaching experience at the Honours level for more than 50 years Gradual increase of demand for admission Teachers' active involvements in multiple activities of the college both Curricular and Co-curricular <p><u>Weakness</u></p> <ul style="list-style-type: none"> Only one teacher holds Ph.D. degree Very few or no research activity at the departmental level No Academic Seminar/Symposia held after the National Seminar in 2011 Less emphasis on curricular enrichment by arranging invited talks/seminar lectures <p><u>Opportunity</u></p> <ul style="list-style-type: none"> Possibilities of introduction of Departmental Magazine may be explored Departmental Seminars may be arranged in frequent intervals More research options is seen on the card Pursuing History at the undergraduate level increases the potential for employability <p><u>Challenges</u></p> <ul style="list-style-type: none"> Striking a balance between the responsibilities within the college and the educational responsibilities given by authority of Calcutta University such as different confidential assignments Maintaining records of the individual and collective activities of the department in the face of non-admissibility of appropriate support staff

Profile of Political Science Department



Teachers of Political Science are seen among the students during a Seminar Lecture



The periphery of Political Science is unlimited

1.	Name of the department	POLITICAL SCIENCE
2.	Year of Establishment	1956
3.	Names of Programmes / Courses offered (UG, PG, M.Phil., Ph.D., Integrated Masters; Integrated Ph.D., etc.)	UG
4.	Names of interdisciplinary courses and the department/units involved	NIL
5.	Annual/ semester/choice based credit system (programme wise)	ANNUAL SYSTEM
6.	Participation of the department in the courses offered by other departments	NOT APPLICABLE
7.	Courses in collaboration with other universities, industries, foreign institutions, etc.	NOT APPLICABLE
8.	Details of courses/programmes discontinued (if any) with reasons	NOT APPLICABLE

9.	Number of Teaching posts
----	--------------------------

Category	Sanctioned	Filled
Professor*	—	—
Associate Professor*	—	—
Assistant Professor	2	1

*There is no post of Professor in Grant-In-Aid colleges

****Post of Assistant Professor is temporarily up graded to the Post of Associate Professor under Career Advancement Scheme (CAS).**

10.	Faculty profile with name, qualification, designation, specialization, (D.Sc./D.Litt. Ph.D. / M. Phil. etc.,)
-----	---

Name	Qualification	Designation	Specialization	No. of Years of Experience	No. of Ph.D Students Guided in last 4 years
APURBA MOHAN MUKHOPADHYAY	M.A.,M.PHIL	ASSOCIATE PROFESSOR	Indian Politics	27	NA
SUSMITA BRAHMA	M.A.	**CWTT	South Asian Study	5	NA
MANISHA MUKHERJEE	M.A.	*PTT	Sociology	5	NA
VIVEKANANDA ROY	M.A.	*PTT	International Relation	5	NA
SILPA SINHA	M.A.	*PTT	International Relation	5	NA

** Government Approved Contractual Whole Time Teachers; * Government Approved Part Time Teachers

11.	List of senior visiting faculty	Prof. Aswini Kumar Roy Prof. Pranab Bandopadhyay Prof. Anuradha Ghosh				
12.	Percentage of lectures delivered and practical classes handled (programme wise)by temporary faculty	Nil				
13.	Student-teacher ratio (programme-wise)	64.40				
14.	Number of Academic Support Staff (technical) and administrative staff; sanctioned and filled	Support Staff: 0 Administrative Staff: 0				
15.	Qualification of teaching faculty with	D.Sc	D.Litt	Ph.D	M.Phil	PG
		0	0	0	1	0
16.	Number of faculty with ongoing projects from	National Funding Agency		International Funding Agency		
		Grants received		Grants Received		
		NIL		NIL		
17.	Departmental projects funded by DST-FIST;UGC,DBT,ICSSR etc, and total grants received	NIL				
18.	Research Centre/facility recognized by the University	Not Applicable				

19.	Publications: Publication per faculty
-----	---------------------------------------

NAMES OF THE FACULTY MEMBERS	APURBA MOHAN MUKHOPADHYAY	SUSMITA BRAHMA	VIVEKANANDA ROY	SILPA SINHA	MANISHA MUKHOPADHYAY		
Number of papers published in peer reviewed journals (national/International) by faculty and students	—	—	—	—	—		
Number of publications listed in International Database (For Eg: Web of Science, Scopus, Humanities International Complete, Dare Database - International Social Sciences Directory, EBSCO host, etc.)	—	—	—	—	—		
Monographs	—	—	—	—	—		
Chapter in Books	—	—	—	—	—		
Books Edited	—	—	—	—	—		
Books with ISBN/ISSN numbers with details of publishers	—	—	—	—	—		
Citation Index	—	—	—	—	—		
SNIP	—	—	—	—	—		
SJR	—	—	—	—	—		
Impact Factor	—	—	—	—	—		
hi-index	—	—	—	—	—		

20.	Areas of consultancy and income generated
-----	---

Not Applicable

21.	Faculty as members in	National Committees	International Committees	Editorial Boards
		NIL	NIL	NIL
22.	Student Projects			
	Percentage of students who have done in-house projects including inter departmental/programme			
	Percentage of students placed for projects in organizations outside the institution i.e.in Research laboratories/Industry/ other agencies			Not Applicable

23.	Awards/recognitions received by the faculty and students	NIL
-----	--	-----

24.	List of eminent academicians and scientists/visitors to the department
-----	--

25.	Seminars/Conferences/Workshops organized & the source of funding	
(a)	National	One UGC-sponsored National Seminar organized in 2011 jointly with the department of History and in collaboration with Institute of Asian Studies, Kolkata
(b)	International	Not Applicable

26.	Student profile (programme/course wise)						
	Name of the Course/Programme (refer question No. 4)	Applications received		Selected	Enrolled		Pass Percentage
					*M	*F	
	Undergraduate (Pass)	College does not keep such records at ‘Pass’ level					
	Undergraduate (Honours)	2011-12	456	25	13	12	100.00
		2012-13	525	47	19	28	94.87
		2013-14	177	49	13	35	85.19
		2014-15	130	46	11	27	71.43
	Postgraduate	Not on offer					

*M= Male, *F=Female

27.	Diversity of Students			
	Name of the Courses	% of students from the same state	% of students from the other state	% of the students from abroad
	Undergraduate (Pass)	100%	NIL	NIL
	Undergraduate (Honours)	100%	NIL	NIL
	Postgraduate	100%	NIL	NIL

28.	How many students have cleared national and state competitive examinations such as NET, SLET, GATE, Civil Services, Defence Services, etc. [verifiable data not available]
-----	--

29.	Student progression [verifiable data not available]
-----	---

Student progression	Against % enrolled
UG to PG	
PG to M.Phil.	
PG to Ph.D.	
Ph.D. to Post-Doctoral	
Employed	
— Campus selection	
— Other than campus recruitment	
Entrepreneurship/Self-employment	

30.	Details of Infrastructural Facilities	
	Library	Not Applicable
	Internet facilities for Staff & Students	Internet facility available in the Library with Wi-Fi connectivity
	Classrooms with ICT Facilities	One departmental laptop computer and one LCD projector (on sharing basis). Photocopier machine is available in the Central Library.
	Laboratories	Not Applicable

31.	Number of students receiving financial assistance from college, university, government or other agencies	College (Students' Aid Fund)	11
		Government(SC/ST/OBC/Minority Scholarships)	0
32.	Details on student enrichment programmes (special lectures / workshops/seminar) with external experts	Special Seminar Lectures delivered by <ul style="list-style-type: none">• Prof. Kumkum Chakraborty• Prof. Devbani Roy Chaudhury• Prof. Malika Sengupta• Prof. Monika Rakshit	
33.	Teaching methods adopted to improve student learning	Conventional method of teaching using chalk & talk and interactive discussion between the students and the teachers	
34	Participation in Institutional Social Responsibility (ISR) and Extension activities	<ul style="list-style-type: none">• Students are encouraged in participating in Blood Donation Camps organized by Students' Union• Students are encouraged to participate in NCC/NSS activity of the college.• Publication of Academic Journal• Holding Parent-Teachers meeting	
35.	SWOC analysis of the department and Future plans		
	<u>Strength</u> <ul style="list-style-type: none">• The concerted effort of one regular teacher, one Contractual Whole Time Teacher, and three Part Time teachers in maintaining the academic service needed to run an Honours Course and one General Course.• More than 50 years departmental experience of teaching Sanskrit at the undergraduate level• Holding Parent-Teachers-Guardian meeting at regular intervals• Special Seminar Lectures are delivered by teachers of high reputation from other institutions• Departmental teacher's participation in Special Seminar Lecture in other institutions• Publication of departmental magazine <u>Weakness</u> <ul style="list-style-type: none">• Only two regular teaching posts (sanctioned) in the department (one vacant)• Student strength sometime goes down to a very low level• Very few research activity at the departmental level• No National/State level Academic Seminar/Symposia held after 2011 <u>Opportunity</u> <ul style="list-style-type: none">• Subject to sanction of two teaching posts by the Government, more course options including postgraduate courses may be considered as was suggested by NAAC Peer Team during their visit in early 2007.• Study of 'Political Science' as a discipline is impregnated with broad opportunities <u>Challenges</u> <ul style="list-style-type: none">• Striking a balance between the responsibilities within the college and the educational responsibilities given by authority of Calcutta University such as different confidential assignments		

A photograph showing four women in a classroom or meeting room. One woman on the right is seated and using a laptop. Three other women are standing or sitting around a table, looking at papers and the laptop. The room has large windows with blue frames and a green door in the background.



Philosophical discourse goes beyond science

1.	Name of the department	PHILOSOPHY
2.	Year of Establishment	1956
3.	Names of Programmes / Courses offered (UG, PG, M.Phil., Ph.D., Integrated Masters; Integrated Ph.D., etc.)	UG
4.	Names of interdisciplinary courses and the department/units involved	NIL
5.	Annual/ semester/choice based credit system (programme wise)	ANNUAL SYSTEM
6.	Participation of the department in the courses offered by other departments	NOT APPLICABLE
7.	Courses in collaboration with other universities, industries, foreign institutions, etc.	NOT APPLICABLE
8.	Details of courses/programmes discontinued (if any) with reasons	NOT APPLICABLE

9.	Number of Teaching posts		
	Category	Sanctioned	Filled
	Professor	—	—
	Associate Professor	—	—
	Assistant Professor	02	02

****Post of Assistant Professor is temporarily up graded to the Post of Associate Professor under Career Advancement Scheme (CAS).**

10.	Faculty profile with name, qualification, designation, specialization, (D.Sc./D.Litt. Ph.D. / M. Phil. etc.,)
-----	---

Name	Qualification	Designation	Specialization	No. of Years of Experience	No. of Ph.D Students Guided in last 4 years
AFROZ AKHTAR	M.A.	ASSOCIATE PROFESSOR	ETHICS	20	NA
MANDRITA BHATTACHARYA AICH	M.A.	ASSISTANT PROFESSOR	PRACTICAL ETHICS	15	NA
PARAMITA MAZUMDAR	M.A.	*PTT	LOGIC	5	NA
SWARNALI MAITRA	M.A.	*PTT	PHILOSOPHY OF LANGUAGE	5	NA
ANIMA BANERJEE	M.A.	*PTT	LOGIC	5	NA
SABARI SEN	M.A.	*PTT	POLITICAL PHILOSOPHY	5	NA

*Government Approved Part Time Teacher

11.	List of senior visiting faculty				Nil		
12.	Percentage of lectures delivered and practical classes handled (programme wise)by temporary faculty				Nil		
13.	Student-teacher ratio (programme-wise)				34.00		
14.	Number of Academic Support Staff (technical) and administrative staff; sanctioned and filled				Support Staff: 0 Administrative Staff: 0		
15.	Qualification of teaching faculty with	D.Sc	D.Litt	Ph.D	M.Phil	PG	
		0	0	0	0	2	
16.	Number of faculty with ongoing projects from	National Funding Agency		International Funding Agency			
		Grants received		Grants Received			
		NIL		NIL			
17.	Departmental projects funded by DST-FIST;UGC,DBT,ICSSR etc, and total grants received				NIL		
18.	Research Centre/facility recognized by the University				Not Applicable		

19.	Publications: Publication per faculty
-----	---------------------------------------

NAMES OF THE FACULTY MEMBERS	AFROZ AKHTAR	MANDRITA BHATTACHARYA AICH	PARAMITA MAZUMDAR	SWARNALI MAITRA	ANIMA BANERJEE	SABARI SEN	
Number of papers published in peer reviewed journals (national/International) by faculty and students	—	—	—	—	—	—	
Number of publications listed in International Database (For Eg: Web of Science, Scopus, Humanities International Complete, Dare Database - International Social Sciences Directory, EBSCO host, etc.)	—	—	—	—	—	—	
Monographs	—	—	—	—	—	—	
Chapter in Books	—	—	—	—	—	—	
Books Edited	—	—	—	—	—	—	
Books with ISBN/ISSN numbers with details of publishers	—	—	—	—	—	—	
Citation Index	—	—	—	—	—	—	
SNIP	—	—	—	—	—	—	
SJR	—	—	—	—	—	—	
Impact Factor	—	—	—	—	—	—	
hi-index	—	—	—	—	—	—	

20.	Areas of consultancy and income generated			Not Applicable
21.	Faculty as members in	National Committees	International Committees	Editorial Boards
		Nil	Nil	Nil
22.	Student Projects			
	Percentage of students who have done in-house projects including inter departmental/programme Percentage of students placed for projects in organizations outside the institution i.e.in Research laboratories/Industry/ other agencies			Not Applicable

23.	Awards/recognitions received by the faculty and students	NIL
-----	--	-----

24.	List of eminent academicians and scientists/visitors to the department	NIL
-----	--	-----

25.	Seminars/Conferences/Workshops organized & the source of funding	
(a)	National	NIL
(b)	International	NIL

26.	Student profile (programme/course wise)						
	Name of the Course/Programme (refer question No. 4)	Applications received		Selected	Enrolled		Pass Percentage
					*M	*F	
	Undergraduate (Honours)	2011-12	395	28	8	20	88.89
		2012-13	345	47	10	36	100.00
		2013-14	69	43	12	27	90.00
		2014-15	100	34	12	19	82.69
	Undergraduate (Pass)	College does not keep such records at 'Pass' level					
	Postgraduate	Not on offer					

*M= Male, *F=Female

27.	Diversity of Students			
	Name of the Courses	% of students from the same state	% of students from the other state	% of the students from abroad
	Undergraduate (Pass)	100%	NIL	NIL
	Undergraduate (Honours)	100%	NIL	NIL
	Postgraduate	100%	NIL	NIL

28.	How many students have cleared national and state competitive examinations such as NET, SLET, GATE, Civil Services, Defence Services, etc. [verifiable data not available]
-----	--

29.	Student progression
-----	---------------------

Student progression	Against % enrolled (verifiable data not available)
UG to PG	
PG to M.Phil.	
PG to Ph.D.	
Ph.D. to Post-Doctoral	
Employed	
— Campus selection	
— Other than campus recruitment	
Entrepreneurship/Self-employment	

30.	Details of Infrastructural Facilities	
	Library	Not Applicable
	Internet facilities for Staff & Students	Internet facility available in the Library with Wi-Fi connectivity
	Classrooms with ICT Facilities	One departmental laptop computer and one LCD projector (on sharing basis). Photocopier

	machine is available in the Central Library.
Laboratories	Not Applicable

31.	Number of students receiving financial assistance from college, university, government or other agencies	College (Students' Aid Fund)	15
		Government(SC/ST/OBC/Minority Scholarships)	11

32.	Details on student enrichment programmes (special lectures / workshops/seminar) with external experts	Nil
-----	---	-----

33.	Teaching methods adopted to improve student learning	Conventional method of teaching using chalk & talk and interactive discussion between the students and the teachers
-----	--	---

34	Participation in Institutional Social Responsibility (ISR) and Extension activities	<ul style="list-style-type: none"> Students are encouraged in participating in Blood Donation Camps organized by Students' Union Students are encouraged to participate in NCC/NSS activity of the college.
----	---	---

35.	SWOC analysis of the department and Future plans
	<p><u>Strength</u></p> <ul style="list-style-type: none"> The concerted effort of two regular teachers and four Part Time teachers helps maintaining the academic service needed to run an Honours Course and one General Course. More than 50 years departmental experience of teaching Political Science at the undergraduate level Holding Parent-Teachers-Guardian meeting at regular intervals <p><u>Weakness</u></p> <ul style="list-style-type: none"> Only two regular teaching posts (sanctioned) in the department Student strength sometime goes down to a very low level No research activity at the departmental level No Academic Seminar/Symposia organized for a long time <p><u>Opportunity</u></p> <ul style="list-style-type: none"> Study of philosophy sharpens intelligence <p><u>Challenges</u></p> <ul style="list-style-type: none"> The greatest challenge is to keep student strength at a moderate to high level

1.	Name of the department	PHYSICS
2.	Year of Establishment	1956
3.	Names of Programmes / Courses offered (UG, PG, M.Phil., Ph.D., Integrated Masters; Integrated Ph.D., etc.)	UG
4.	Names of interdisciplinary courses and the department/units involved	NIL
5.	Annual/ semester/choice based credit system (programme wise)	ANNUAL SYSTEM
6.	Participation of the department in the courses offered by other departments	NOT APPLICABLE
7.	Courses in collaboration with other universities, industries, foreign institutions, etc.	NOT APPLICABLE
8.	Details of courses/programmes discontinued (if any) with reasons	NOT APPLICABLE

9.	Number of Teaching posts
----	--------------------------

Category	Sanctioned	Filled
Professor*	—	—
Associate Professor**	—	—
Assistant Professor	7	7 (2 Teacher Retd. In 2015)

****Post of Assistant Professor is temporarily up graded to the Post of Associate Professor under Career Advancement Scheme (CAS)**

10.	Faculty profile with name, qualification, designation, specialization, (D.Sc./D.Litt. Ph.D. / M. Phil. etc.,)
-----	---

Name	Qualification	Designation	Specialization	No. of Years of Experience	No. of Ph.D Students Guided in last 4 years
ASISH GHOSH	M.SC., M.PHIL.	ASSOCIATE PROFESSOR	BIOPHYSICS	33	NIL
MANASI DAS	M.SC., PH.D.	ASSOCIATE PROFESSOR	SOLID STATE DEVICE	23	NIL
ARUN KUMAR MUKHOPADHYAY	M.SC. (TECH)	ASSOCIATE PROFESSOR	COPPER, TITANIUM CARBIDE SEMICONDUCTING MATERIAL	22	NIL
PHALGUNI GUPTA	M.SC., PH.D.	ASSOCIATE PROFESSOR	SEMICONDUCTOR & SOLAR CELL TECHNOLOGY	16	NIL
ARUNIMA CHANDA	M.SC., PH.D.	ASSOCIATE PROFESSOR	MICROSTRUCTURE ANALYSIS OF INDUSTRIAL ALLOYS	16	NIL
RAJSEKHAR BHATTACHARYA	M.SC., PH.D.	ASSISTANT PROFESSOR	ALGEBRA-LOCAL CHRONOLOGY	16	NIL
SUVRAKANTA DUTTA	M.SC., PH.D.	ASSOCIATE PROFESSOR	SOLID STATE PHYSICS	24	NIL
SATYA N. GHOSH	M.SC.	*PTT	SOLID STATE PHYSICS	5	NIL

*Government approved Part Time Teacher

11.	List of senior visiting faculty				Nil	
12.	Percentage of lectures delivered and practical classes handled (programme wise)by temporary faculty				Nil	
13.	Student-teacher ratio (programme-wise)				33.54	
14.	Number of Academic Support Staff (technical) and administrative staff; sanctioned and filled				One Graduate Laboratory Instructor (Teaching Staff) Support Staff: 2	
15.	Qualification of teaching faculty with	D.Sc	D.Litt	Ph.D	M.Phil	PG
		0	0	5	1	1
16.	Number of faculty with ongoing projects from	National Funding Agency		International Funding Agency		
		Grants received		Grants Received		
		NIL		NIL		
17.	Departmental projects funded by DST-FIST;UGC,DBT,ICSSR etc, and total grants received				NOT APPLICABLE	
18.	Research Centre/facility recognized by the University				Not Applicable	

19.	Publications: Publication per faculty
-----	---------------------------------------

NAMES OF THE FACULTY MEMBERS	ASISH GHOSH (RETD)	MANASI DAS (RETD)	ARUN MUKHOPADHYAY	PHALGUNI GUPTA	ARUNIMA CHANDA	RAJSEKHAR BHATTACHARYA	SUVRAKANTA DUTTA	SATYA NARAYAN GHOSH
Number of papers published in peer reviewed journals (national/International) by faculty and students	—	—	—	—	—	—	—	—
Number of publications listed in International Database (For Eg: Web of Science, Scopus, Humanities International Complete, Dare Database - International Social Sciences Directory, EBSCO host, etc.)	—	—	—	—	—	—	—	—
Monographs	—	—	—	—	—	—	—	—
Chapter in Books	—	—	—	—	—	—	—	—
Books Edited	—	—	—	—	—	—	—	—
Books with ISBN/ISSN numbers with details of publishers	—	—	—	—	—	—	—	—
Citation Index	—	—	—	—	—	—	—	—
SNIP	—	—	—	—	—	—	—	—
SJR	—	—	—	—	—	—	—	—
Impact Factor	—	—	—	—	—	—	—	—
hi-index	—	—	—	—	—	—	—	—

20.	Areas of consultancy and income generated	Not Applicable
-----	---	----------------

21.	Faculty as members in	National Committees	International Committees	Editorial Boards
		Not Applicable	Not Applicable	Not Applicable
22.	Student Projects	Not Applicable		
	Percentage of students who have done in-house projects including inter departmental/programme Percentage of students placed for projects in organizations outside the institution i.e.in Research laboratories/Industry/ other agencies	Not Applicable		

23.	Awards/recognitions received by the faculty and students	Nil
-----	--	-----

24.	List of eminent academicians and scientists/visitors to the department
-----	--

	[Nil]
--	-------

25.	Seminars/Conferences/Workshops organized & the source of funding		
	(a)	National	The department of Physics was a collaborator in the National Seminar in the year 2013 with Ramakrishna Mission Residential College, Narendrapur
	(b)	International	Nil

26.	Student profile (programme/course wise)						
	Name of the Course/Programme (refer question No. 4)	Applications received		Selected	Enrolled		Pass Percentage
					*M	*F	
		2011-12	1509	56	30	18	88.46
		2012-13	1233	63	37	20	83.33
		2013-14	711	91	51	20	93.94
	Undergraduate (Honours)	2014-15	859	111	33	12	100.00
	Undergraduate (Pass)	College does not keep such records at ‘Pass’ level					
	Postgraduate	Not on offer					

*M= Male, *F=Female

27.	Diversity of Students			
	Name of the Courses	% of students from the same state	% of students from the other state	% of the students from abroad
	Undergraduate (Pass)	100%	NIL	NIL
	Undergraduate (Honours)	100%	NIL	NIL
	Postgraduate	100%	NIL	NIL

28.	How many students have cleared national and state competitive examinations such as NET,SLET, GATE, Civil Services, Defence Services, etc.[verifiable data not available]
-----	--

29.	Student progression [verifiable data not available]
-----	---

Student progression	Against % enrolled (verifiable data not available)
UG to PG	
PG to M.Phil.	
PG to Ph.D.	
Ph.D. to Post-Doctoral	
Employed	
— Campus selection	
— Other than campus recruitment	
Entrepreneurship/Self-employment	

30.	Details of Infrastructural Facilities	
	Library	Departmental Library contains 1347 books for the use of teachers and students
	Internet facilities for Staff & Students	Internet facility available in the Library with Wi-Fi connectivity
	Classrooms with ICT Facilities	Departmental computers and one LCD projector (on sharing basis). Practical IT classes of the students of Physics (Honours) are held in the Computer Centre of the college. One photocopier machine is available in the Central Library.
	<p><u>Laboratories</u> The department of Physics of Dinabandhu Andrews College is equipped with seven Laboratories the students pursuing Physics at the General and Honours level.</p> <p><u>Laboratory No. 1</u> This laboratory is equipped with required infrastructure for the experiments on mechanics, electronics and electricity.</p> <p><u>Laboratory No. 2</u> This laboratory is equipped with required infrastructure for the experiments on Optics. This laboratory is furnished with sodium and mercury light sources, spectrometers and optical benches required for the conduction of optical experiments.</p> <p><u>Laboratory No. 3</u> This laboratory is equipped with required infrastructure for the experiments on electronics. This laboratory is equipped with battery, galvanometers and the kits related to electronic experiments.</p> <p><u>Laboratory No. 4</u> This laboratory is dedicated for electronics and thermal experiments. This laboratory is equipped with cathode ray oscilloscopes, function generators and kits required for electronics experiments. This lab is also fitted with gas supply lines for heating purposes.</p> <p><u>Laboratory No. 5.</u> This laboratory is dedicated for electrical and thermal experiments. This laboratory is furnished with ballistic galvanometers and storage cells for electrical experiments. This lab is also fitted with gas supply lines for heating purposes.</p> <p><u>Laboratory No. 6</u> This laboratory is dedicated as a dark room for the experiments related to Optics. This laboratory is furnished with sodium and mercury light sources, spectrometers and optical benches required for the conduction of optical experiments.</p> <p><u>Laboratory No. 7</u> A number of computers have been installed in a part of this Lab. The computers are used by B.Sc IIIrd Year Honours and and B.Sc IIIrd Year General students. The computers are also used for data entry and stock keeping of the department. The remaining part of this Lab is dedicated for practical experimentation of the students of B.Sc IIIrd Year General class.</p>	

31.	Number of students receiving financial assistance from college, university, government or other agencies	College (Students' Aid Fund)	40
		Government(SC/ST/OBC/Minority Scholarships)	09
32.	Details on student enrichment programmes (special lectures / workshops/seminar) with external experts	Nil	

33.	Teaching methods adopted to improve student learning	<ul style="list-style-type: none"> • Conventional method of teaching (Class lecture, interaction, board works etc) and interactive discussion between the teacher and the students • Occasional use of LCD Projector
-----	--	--

34	Participation in Institutional Social Responsibility (ISR) and Extension activities	<ul style="list-style-type: none"> • Students are encouraged in participating in Blood Donation Camps organized by Students' Union • Students are encouraged to participate in NCC/NSS activity of the college.
----	---	---

35.	SWOC analysis of the department and Future plans	
	<p><u>Strength</u></p> <ul style="list-style-type: none"> • Most of the sanctioned teaching posts are filled; only 2 out of 7 sanctioned posts are vacant • Four out of five teachers hold Ph.D. degree • All regular teachers are Associate Professors • Teaching experience at the Honours level for more than 50 years • Gradual increase of demand for admission • Spacious laboratories with rich collection of instruments/equipment • Teachers' active involvements in multiple activities of the college both Curricular and Co-curricular <p><u>Weakness</u></p> <ul style="list-style-type: none"> • Research activity less than expected at the departmental level • No Academic Seminar/Symposia held after the National Seminar in 2011 except acting as 'Collaborator' with Ramakrishna Mission in one National Seminar held in 2013 • Less emphasis on curricular enrichment by arranging invited talks/seminar lectures • Non-admissibility of any technical/administrative staff <p><u>Opportunity</u></p> <ul style="list-style-type: none"> • Being one of the oldest Honours teaching departments in Science, Physics department can look forwards for establishment of 'Departmental Research Centre' for Lab-based/Theoretical research. • Possibilities of introduction of Departmental Magazine may be explored • Departmental Seminars may be arranged in frequent intervals <p><u>Challenges</u></p> <ul style="list-style-type: none"> • Striking a balance between the work schedule related to Examination and teaching which is increasing at a rapid pace • Protecting the right and need of the students for a minimum number of classes against the essential responsibility of the department to hold 6-7 Practical Examinations every year • Maintaining records of the individual and collective activities of the department in the face of non-admissibility of appropriate support staff 	

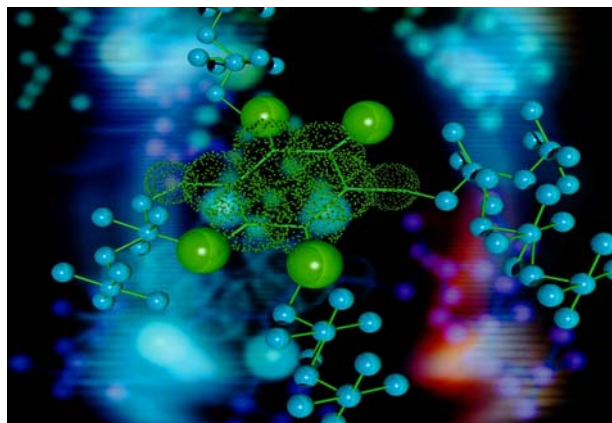
Sr. No	Instrument	Appropriate for
1	Anderson bridge Apparatus (× 2)	For doing Amderson Bridge experiment
2	Ammeter(× 14)	For Current measurement
3	Battery(× 12)	Used as source of current and voltage
4	Bridge rectifier apparatus(× 4)	Used for Rectification experiments

5	Ballistic Galvanometer(× 2)	Used for measuring charge
6	Band gap apparatus(× 2)	Used for measuring band gap of semiconductors
7	B-H apparatus(× 1)	Used for experiments based on electromagnetism
8	Cathode ray Oscilloscope(× 6)	Used for measuring A.C. voltages.
9	Carey fosters bridge(× 2)	Used for resistance measurement
10	Computers(× 3)	Used for data entry and programming
11	Double slit apparatus(× 1)	Used for interference experiment
12	Deflection magnetometer(× 4)	Used for experiments with magnets
13	Function generators(× 5)	Used for generating waveforms of desired shape
14	Fresnel Biprism Set up(× 1)	Used for interference experiment
15	FET Apparatus(× 2)	Used for drawing JFET characteristics
16	FET Amplifier apparatus(× 2)	Used for designing JFET amplifiers
17	Galvanometers(× 5)	For null detection
18	Hybrid parameter kit(× 2)	Used to determine hybrid parameters of a transistor
19	IC tester(× 1)	Used to test whether an IC is defective or not
20	LCR Apparatus(× 3)	Used for A.C. Experiments
21	Laser apparatus(× 1)	Crossed grating experiments
22	Logic Gate apparatus(× 3)	Used for digital experiments
23	Moment of Inertia apparatus(× 2)	Used for measuring the Moment of Inertia of a body
24	Multimeters(× 4)	For miscellaneous uses
25	Mutual inductance apparatus(× 1)	Used for measuring mutual inductance of a pair of coils
26	Newtons ring apparatus(× 2)	Used for interference experiment
27	Optical bench(× 2)	Used for experiments with lenses
28	OPAMP Kit(× 5)	Used for operational amplifier experiments
29	Polarimeter(× 3)	Used for optical activity measurements
30	Potentiometer(× 3)	Used for current and voltage measurement
31	Rigidity modulus apparatus(× 2)	Used for measuring the rigidity modulus of a wire
32	Regulated power supply apparatus(× 2)	Used for designing regulated power supply
33	Stefan's law apparatus(× 2)	Used for verification of Stefan's Law
34	Spectrometer(× 6)	Used for optical experiments based on interference, diffraction and refraction through prism
35	Thermocouple apparatus(× 1)	Used for measuring thermoelectric power
36	Travelling microscope(× 4)	Used for measuring very small distances
37	Transistor set up(× 3)	Used for transistor characteristic drawing
38	Thermal conductivity apparatus(× 2)	Used for measuring the thermal conductivity of a poor conductor
39	Wien Bridge Apparatus(× 1)	Used for designing Wien bridge oscillator
40	Voltmeters(× 15)	For potential difference measurements
41	Vibration magnetometer(× 2)	Used for experiments with magnets
42	Zener Apparatus(× 4)	Used for experiments with Zener Diode

Profile of the Chemistry Department



Teachers of Chemistry are seen busy with an academic pursuit



Chemical understanding helps live better

1.	Name of the department	CHEMISTRY
2.	Year of Establishment	1956
3.	Names of Programmes / Courses offered (UG, PG, M.Phil., Ph.D., Integrated Masters; Integrated Ph.D., etc.)	UG
4.	Names of interdisciplinary courses and the department/units involved	NIL
5.	Annual/ semester/choice based credit system (programme wise)	ANNUAL SYSTEM
6.	Participation of the department in the courses offered by other departments	NOT APPLICABLE
7.	Courses in collaboration with other universities, industries, foreign institutions, etc.	NOT APPLICABLE
8.	Details of courses/programmes discontinued (if any) with reasons	NOT APPLICABLE

9.	Number of Teaching posts
----	--------------------------

Category	Sanctioned	Filled
Professor*	—	—
Associate Professor**	—	—
Assistant Professor	7	7

*There is no post of Professor in Grant-In-Aid colleges

**Post of Assistant Professor is temporarily up graded to the Post of Associate Professor under Career Advancement Scheme (CAS).

10.	Faculty profile with name, qualification, designation, specialization, (D.Sc./D.Litt. Ph.D. / M. Phil. etc.,)
-----	---

Name	Qualification	Designation	Specialization	No. of Years of Experience	No. of Ph.D Students Guided in last 4 years
MALOY BHATTACHARYA	M.SC.,PH.D	ASSOCIATE PROFESSOR	NATURAL PRODUCTS	23	NIL
TANYA DAS	M.SC.,PH.D	ASSOCIATE PROFESSOR	INOCITOL COMPOUNDS	17	NIL
BISWAJIT HALDER	M.SC.	ASSISTANT PROFESSOR	NANO-CRYSTALS	9	NIL
RAJESH BERA	M.SC.,PH.D	ASSISTANT PROFESSOR	CATALYSIS	9	NIL
DIBAKAR SARDAR	M.SC.,PH.D	ASSISTANT PROFESSOR	ORGANO-METALLICS	7	NIL
MADHUSUDAN SHIT	M.SC.	ASSISTANT PROFESSOR	COORDINATION CHEMISTRY	5	NIL
CHANDANA PRAMANIK	M.SC.	ASSISTANT PROFESSOR	IR RADIATION ON MAN	5	NIL

11.	List of senior visiting faculty					Not Applicable	
12.	Percentage of lectures delivered and practical classes handled (programme wise)by temporary faculty					Not Applicable	
13.	Student-teacher ratio (programme-wise)					27.00	
14.	Number of Academic Support Staff (technical) and administrative staff; sanctioned and filled					Support Staff: 3 Administrative Staff: 0	
15.	Qualification of teaching faculty with	D.Sc.	D.Litt	Ph.D.	M.Phil.	PG	
		0	0	3	0	4	
16.	Number of faculty with ongoing projects from	National Funding Agency		International Funding Agency			
		Grants received		Grants Received			
		Rs.172500 (UGC)		NIL			
17.	Departmental projects funded by DST-FIST;UGC,DBT,ICSSR etc, and total grants received				NIL		
18.	Research Centre/facility recognized by the University				Not Applicable		

19.	Publications: Publication per faculty
-----	---------------------------------------

NAMES OF THE FACULTY MEMBERS	MALAY BHATTACHARYA	TANIYA DAS	BISWAJIT HARLER	REAJEST BERA	DIBAKAR SARDAR	MADHUSUDAN SHIT	CHANDANA PRAMANIK
Number of papers published in peer reviewed journals (national/International) by faculty and students	4	9	—	10	10	—	—
Number of publications listed in International Database (For Eg: Web of Science, Scopus, Humanities International Complete, Dare Database - International Social Sciences Directory, EBSCO host, etc.)	—	—	—	—	—	—	—
Monographs	—	—	—	—	—	—	—
Chapter in Books	—	—	—	—	—	—	—
Books Edited	—	—	—	—	—	—	—
Books with ISBN/ISSN numbers with details of publishers	—	2	—	—	—	—	—
Citation Index	—	—	—	—	—	—	—
SNIP	—	—	—	—	—	—	—
SJR	—	—	—	—	—	—	—
Impact Factor	—	—	—	—	—	—	—
hi-index	—	—	—	—	—	—	—

20.	Areas of consultancy and income generated	Not Applicable
-----	---	----------------

21.	Faculty as members in	National Committees	International Committees	Editorial Boards
		Nil	Nil	Nil
22.	Student Projects	Nil		
	Percentage of students who have done in-house projects including inter departmental/programme Percentage of students placed for projects in organizations outside the institution i.e.in Research laboratories/Industry/ other agencies	Nil		

23.	Awards/recognitions received by the faculty and students	Nil
-----	--	-----

24.	List of eminent academicians and scientists/visitors to the department	Nil
-----	--	-----

25.	Seminars/Conferences/Workshops organized & the source of funding	
(a)	National	The department of Chemistry was a collaborator in the National Seminar
(b)	International	Nil

26.	Student profile (programme/course wise)						
	Name of the Course/Programme (refer question No. 4)	Applications received		Selected	Enrolled		Pass Percentage
					*M	*F	
	Undergraduate (Honours)	2011-12	1181	34	20	13	100.00
		2012-13	1081	41	25	13	100.00
		2013-14	892	74	38	24	100.00
		2014-15	616	94	20	19	100.00
	Postgraduate	Not on offer					

*M= Male, *F=Female

27.	Diversity of Students			
	Name of the Courses	% of students from the same state	% of students from the other state	% of the students from abroad
	Undergraduate (Pass)	100%	NIL	NIL
	Undergraduate (Honours)	100%	NIL	NIL
	Postgraduate	100%	NIL	NIL

28.	How many students have cleared national and state competitive examinations such as NET, SLET, GATE, Civil Services, Defence Services, etc. [verifiable data not available]
-----	--

29.	Student progression [verifiable data not available]	
	Student progression	Against % enrolled
	UG to PG	
	PG to M.Phil.	
	PG to Ph.D.	
	Ph.D. to Post-Doctoral	
	Employed	
	— Campus selection	
	— Other than campus recruitment	
	Entrepreneurship/Self-employment	

30.	Details of Infrastructural Facilities	
	Library	Departmental Library contains 520 books for the use of teachers and students
	Internet facilities for Staff & Students	Internet facility available in the Library with Wi-Fi connectivity
	Classrooms with ICT Facilities	One departmental computer and one LCD projector (on sharing basis). Students can avail the facility of Computer Centre as and when needed. Photocopier machine is available in the Central Library.
	Laboratories	Not Applicable

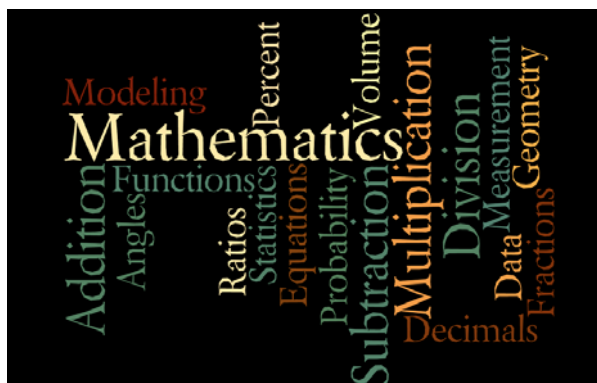
31.	Number of students receiving financial assistance from college, university, government or other agencies	College (Students' Aid Fund)	42
		Government(SC/ST/OBC/Minority Scholarships)	02
32.	Details on student enrichment programmes (special lectures / workshops/seminar) with external experts	Nil	
33.	Teaching methods adopted to improve student learning	<ul style="list-style-type: none">• Conventional method of teaching (Class lecture, interaction, board works etc) and interactive discussion between the teacher and the students• Occasional use of LCD Projector	
34	Participation in Institutional Social Responsibility (ISR) and Extension activities	<ul style="list-style-type: none">• Students are encouraged in participating in Blood Donation Camps organized by Students' Union• Students are encouraged to participate in NCC/NSS activity of the college.	
35	SWOC analysis of the department and Future plans		
<u>Strength</u>			
<ul style="list-style-type: none">• All of the seven sanctioned teaching posts are filled up• Four teachers hold Ph.D degree while other two are pursuing Ph.D. works• Associate Professor/Assistant Professor ratio is 2/5 indicating predominance of young teachers• Very strong infrastructure including LPG based burners and highly protected acid room• High success rate of the students at the Calcutta University Examinations• A good number of papers and books have been authored by the teachers			
<u>Weakness</u>			
<ul style="list-style-type: none">• Non-permissibility of technical staff• Non-permissibility of Store Keeper• Department has not organized Seminar/Symposia/Workshop for a long time• Only one Minor Research Project currently in force			
<u>Opportunity</u>			
<ul style="list-style-type: none">• Young and enthusiastic teachers likely to shoulder more responsibility in near future• High demand ratio between the number of seats and the number of applicants is likely to ensure inclusion of better students in successive years• The department has the potential for conducting more intense research work			
<u>Challenge</u>			
<ul style="list-style-type: none">• Restricting increased intake of students to manageable number in the face of national target of increasing Gross Enrolment Ratio• Accommodating more and more students in the laboratories for practical classes• Finding time by the faculty members for doing all kind of the clerical works• Striking balance between the pressure of Calcutta University Examinations and the demand of quality classes in sufficiently good numbers			



The students of Chemistry are seen learning Chemistry under the watchful eyes of learned teachers

S/N	Name of the Instruments/Equipment	Appropriate
1	Polarimeter	Determination of Sp. Rotation and inversion
2	Conductometer	Determination of concentration of mixed acids, saponification, ionization constant and solubility pdt
3	Potentiometer	Determination of E_0 , concentration and solubility pdt.
4	Spectrophotometer	Lambert-Beer's law, determination of pK_{IN} & kinetics of $S_2O_8^{2-}$ oxidation
5	P^H meter	Determination of pK_w of weak acids
6	Electronic Analytical balance	For all quantitative analysis
7	Electronic Centrifuge	For semi-micro analysis
8	Hot plate	For semi-micro analysis
9	Air oven	Both quantitative and qualitative analysis

Profile of the Mathematics Department



Teachers of the department of Mathematics

All things in nature occur mathematically

1.	Name of the department	MATHEMATICS
2.	Year of Establishment	1956
3.	Names of Programmes / Courses offered (UG, PG, M.Phil., Ph.D., Integrated Masters; Integrated Ph.D., etc.)	UG
4.	Names of interdisciplinary courses and the department/units involved	NIL
5.	Annual/ semester/choice based credit system (programme wise)	ANNUAL SYSTEM
6.	Participation of the department in the courses offered by other departments	NOT APPLICABLE
7.	Courses in collaboration with other universities, industries, foreign institutions, etc.	NOT APPLICABLE
8.	Details of courses/programmes discontinued (if any) with reasons	NOT APPLICABLE

9.	Number of Teaching posts
----	--------------------------

Category	Sanctioned	Filled
Professor*	—	—
Associate Professor**	—	—
Assistant Professor	4	2

*There is no post of Professor in Grant-In-Aid colleges

**Post of Assistant Professor is temporarily up graded to the Post of Associate Professor under Career Advancement Scheme (CAS)

10.	Faculty profile with name, qualification, designation, specialization, (D.Sc./D.Litt. Ph.D. / M. Phil. etc.,)
-----	---

Name	Qualification	Designation	Specialization	No. of Years of Experience	No. of Ph.D Students Guided in last 4 years
TARUN PRADHAN	M.SC., PH.D.	ASSOCIATE PROFESSOR	BIO-MATHEMATICS	14	NIL
SOUMEN SHAW	M.SC., PH.D.	ASSISTANT PROFESSOR	SOLID MECHANICS	0.5	NIL

11.	List of senior visiting faculty				Dr.Sikha Bhattacharya		
12.	Percentage of lectures delivered and practical classes handled (programme wise)by temporary faculty				NiL		
13.	Student-teacher ratio (programme-wise)				52.67		
14.	Number of Academic Support Staff (technical) and administrative staff; sanctioned and filled				Support Staff: 0 Administrative Staff: 0		
15.	Qualification of teaching faculty with	D.Sc	D.Litt	Ph.D	M.Phil	PG	
		0	0	2	0	0	
16.	Number of faculty with ongoing projects from	National Funding Agency		International Funding Agency			
		Grants received		Grants Received			
		NIL		NIL			
17.	Departmental projects funded by DST-FIST;UGC,DBT,ICSSR etc, and total grants received				NIL		
18.	Research Centre/facility recognized by the University				Not Applicable		

19.	Publications: Publication per faculty
-----	---------------------------------------

NAMES OF THE FACULTY MEMBERS	TARUN PRADHAN	SOUMEN SHAW					
Number of papers published in peer reviewed journals (national/International) by faculty and students	7	4					
Number of publications listed in International Database (For Eg: Web of Science, Scopus, Humanities International Complete, Dare Database - International Social Sciences Directory, EBSCO host, etc.)	7	4					
Monographs	—	—					
Chapter in Books	—	—					
Books Edited	—	—					
Books with ISBN/ISSN numbers with details of publishers	—	—					
Citation Index	—	—					
SNIP	—	—					
SJR	—	—					
Impact Factor	—	—					
hi-index	—	—					

20.	Areas of consultancy and income generated	Not Applicable
-----	---	----------------

21.	Faculty as members in	National Committees	International Committees	Editorial Boards
		Not Applicable	Not Applicable	Not Applicable
22.	Student Projects	NIL		
	Percentage of students who have done in-house projects including inter departmental/programme			
	Percentage of students placed for projects in organizations outside the institution i.e.in Research laboratories/Industry/ other agencies			

23.	Awards/recognitions received by the faculty and students	Nil
-----	--	-----

24.	List of eminent academicians and scientists/visitors to the department	Nil
-----	--	-----

25.	Seminars/Conferences/Workshops organized & the source of funding		
	(a)	National	Nil
	(b)	International	Nil

26.	Student profile (programme/course wise)						
	Name of the Course/Programme (refer question No. 4)	Applications received		Selected	Enrolled		Pass Percentage
					*M	*F	
	Undergraduate (Honours)	2011-12	1143	28	20	6	67.88
		2012-13	615	39	25	13	87.50
		2013-14	669	71	43	15	80.00
		2014-15	479	82	20	17	71.79
	Postgraduate	Not on offer					

*M= Male, *F=Female

27.	Diversity of Students			
	Name of the Courses	% of students from the same state	% of students from the other state	% of the students from abroad
	Undergraduate (Pass)	100%	NIL	NIL
	Undergraduate (Honours)	100%	NIL	NIL
	Postgraduate	100%	NIL	NIL

28.	How many students have cleared national and state competitive examinations such as NET, SLET, GATE, Civil Services, Defence Services, etc.[verifiable data not available]
-----	---

29.	Student progression .[verifiable data not available]
-----	--

Student progression	Against % enrolled
UG to PG	
PG to M.Phil.	
PG to Ph.D.	
Ph.D. to Post-Doctoral	
Employed	
— Campus selection	
— Other than campus recruitment	
Entrepreneurship/Self-employment	

30.	Details of Infrastructural Facilities	
	Library	Departmental Library contains 603 books for the use of teachers and students
	Internet facilities for Staff & Students	Internet facility available in the Library with Wi-Fi connectivity
	Classrooms with ICT Facilities	One departmental laptop computer and one LCD projector (on sharing basis). Photocopier machine is available in the Central Library.
	Laboratories	Not Applicable

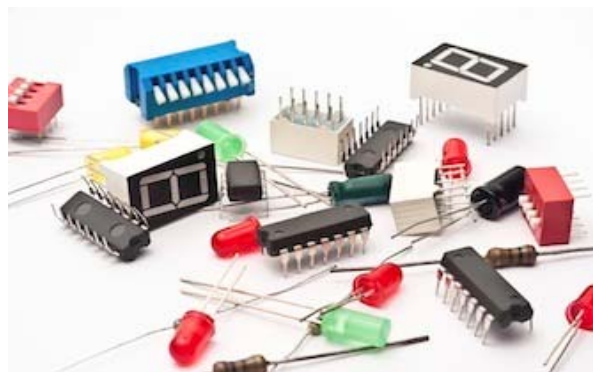
31.	Number of students receiving financial assistance from college, university, government or other agencies	College (Students' Aid Fund)	29
		Government(SC/ST/OBC/Minority Scholarships)	03

32.	Details on student enrichment programmes (special lectures / workshops/seminar) with external experts	Nil
33.	Teaching methods adopted to improve student learning	Conventional method of teaching (Class lecture, interaction, board works etc) and interactive discussion between the teacher and the students
34.	Participation in Institutional Social Responsibility (ISR) and Extension activities	<ul style="list-style-type: none"> Students are encouraged in participating in Blood Donation Camps organized by Students' Union Students are encouraged to participate in NCC/NSS activity of the college.
35.	SWOC analysis of the department and Future plans <u>Strength</u> <ul style="list-style-type: none"> All teachers in position hold Ph.D. degree High level of demand for admission A good number of papers and books have been authored by the teachers <u>Weakness</u> <ul style="list-style-type: none"> Fifty per cent teaching posts are vacant Non-permissibility of technical staff Department has not organized Seminar/Symposia/Workshop for a long time <u>Opportunity</u> <ul style="list-style-type: none"> Young and enthusiastic teachers likely to join the college in near future High demand ratio between the number of seats and the number of applicants is likely to ensure inclusion of better students in successive years <u>Challenge</u> <ul style="list-style-type: none"> Restricting increased intake of students to manageable number in the face of national target of increasing Gross Enrolment Ratio Accommodating more and more students in the IT laboratories for practical classes Finding time by the faculty members for doing all kind of the clerical works Striking balance between the pressure of Calcutta University Examinations and the demand of quality classes in sufficiently good numbers 	

Profile of the Electronics Department



The students are seen interacting with a teacher in the Electronics Laboratory



Electronics has reached everywhere in the present day life

1.	Name of the department	ELECTRONICS
2.	Year of Establishment	1995
3.	Names of Programmes / Courses offered (UG, PG, M.Phil., Ph.D., Integrated Masters; Integrated Ph.D., etc.)	UG & PG
4.	Names of interdisciplinary courses and the department/units involved	NIL
5.	Annual/ semester/choice based credit system (programme wise)	ANNUAL SYSTEM
6.	Participation of the department in the courses offered by other departments	NOT APPLICABLE
7.	Courses in collaboration with other universities, industries, foreign institutions, etc.	NOT APPLICABLE
8.	Details of courses/programmes discontinued (if any) with reasons	NOT APPLICABLE

9.	Number of Teaching posts	
Category	Sanctioned	Filled
Professor*	—	—
Associate Professor**	—	—
Assistant Professor	5	1

*There is no post of Professor in Grant-In-Aid colleges

**Post of Assistant Professor is temporarily up graded to the Post of Associate Professor under Career Advancement Scheme (CAS)

10.	Faculty profile with name, qualification, designation, specialization, (D.Sc./D.Litt. Ph.D. / M. Phil. etc.,)
-----	---

Name	Qualification	Designation	Specialization	No. of Years of Experience	No. of Ph.D Students Guided in last 4 years
T.N. CHATTOPADHYAY	M.SC., PH.D.	ASSOCIATE PROFESSOR	SOLAR-TERRESTRIAL INTERACTION	15	NIL
ADRIJA BANERJEE	M.SC.	CWTT*	SOLAR GEOMAGNETIC MODELING	5	NIL
AMARESH BEJ	M.SC.	CWTT*	SUN-MAGNETOSPHERE INTERACTION	5	NIL
MOUMITA KUMAR (ROY)	M.SC.	CWTT*	IMAGE PROCESSING	5	NIL
MUNNA DUTTA	M.SC.	CWTT*	NUCLEAR PHYSICS	5	NIL

* Government Approved Contractual Whole Time Teacher

11.	List of senior visiting faculty					
	Sudip K. Deb Roy, Retd. Scientist, CSIR			Subodh Kumar Dutta, CEO, Adv. Digi. Tech.		
	Sisir Kumar Basu, Retd. Professor			Subhendu Chanda, Faculty		
	Sushil Kumar Sarkar, Retd. Professor			Joydeep Sengupta, Faculty		
12.	Percentage of lectures delivered and practical classes handled (programme wise)by temporary faculty				UG:30.00% PG:30.00%	
13.	Student-teacher ratio (programme-wise)				UG:16.10 PG:05.60	
14.	Number of Academic Support Staff (technical) and administrative staff; sanctioned and filled				Support Staff: 2 Administrative Staff: 0	
15.	Qualification of teaching faculty with	D.Sc	D.Litt	Ph.D	M.Phil	PG
		0	0	1	0	0
16.	Number of faculty with ongoing projects from	National Funding Agency		International Funding Agency		
		Grants received		Grants Received		
		NIL		NIL		
17.	Departmental projects funded by DST-FIST,UGC,DBT,ICSSR etc, and total grants received				NIL	
18.	Research Centre/facility recognized by the University				Not Applicable	

19.	Publications: Publication per faculty
-----	---------------------------------------

NAMES OF THE FACULTY MEMBERS	T.N. CHATTOPADHYAY	ADRIJA BANERJEE	AMARESH BEJ	MOUMITA KUMAR (ROY)	MUNNA DUTTA		
Number of papers published in peer reviewed journals (national/International) by faculty and students	5	2	2	—	—		
Number of publications listed in International Database (For Eg: Web of Science, Scopus, Humanities International Complete, Dare Database - International Social Sciences Directory, EBSCO host, etc.)	—	—	—	—	—		
Monographs	—	—	—	—	—		
Chapter in Books	—	—	—	—	—		
Books Edited	—	—	—	—	—		
Books with ISBN/ISSN numbers with details of publishers	—	—	—	—	—		
Citation Index	—	—	—	—	—		
SNIP	—	—	—	—	—		
SJR	—	—	—	—	—		
Impact Factor	—	—	—	—	—		
hi-index	—	—	—	—	—		

20.	Areas of consultancy and income generated			Not Applicable
21.	Faculty as members in	National Committees	International Committees	Editorial Boards
		Not Applicable	Not Applicable	Not Applicable
22.	Student Projects			
	Percentage of students who have done in-house projects including inter departmental/programme		Submission of report of Project Work is mandatory for all M.Sc. Final year students	
	Percentage of students placed for projects in organizations outside the institution i.e.in Research laboratories/Industry/ other agencies			

23.	Awards/recognitions received by the faculty and students	Nil
-----	--	-----

24.	List of eminent academicians and scientists/visitors to the department	<ul style="list-style-type: none"> Dr. Somnath Sarkar, Calcutta University
-----	--	---

25.	Seminars/Conferences/Workshops organized & the source of funding		
	(a)	National	Nil
	(b)	International	Nil

26.	Student profile (programme/course wise)						
	Name of the Course/Programme (refer question No. 4)	Applications received		Selected	Enrolled		Pass Percentage
					*M	*F	
	Undergraduate (Honours)	2011-12	402	20	14	5	100.00
		2012-13	366	41	27	13	100.00
		2013-14	133	42	17	12	100.00
		2014-15	166	62	16	23	100.00
	Postgraduate	2011-12	--	22	14		100.00
		2012-13	110	23	22		100.00
		2013-14	93	23	12		100.00
		2014-15	70	28	20		100.00
	Undergraduate (Pass)	College does not keep such records at ‘Pass’ level					

*M= Male, *F=Female

27.	Diversity of Students			
	Name of the Courses	% of students from the same state	% of students from the other state	% of the students from abroad
	Undergraduate (Pass)	100%	NIL	NIL
	Undergraduate (Honours)	100%	NIL	NIL
	Postgraduate	100%	NIL	NIL

28.	How many students have cleared national and state competitive examinations such as NET,SLET, GATE, Civil Services, Defence Services, etc. [verifiable data not available]
-----	---

29.	Student progression [verifiable data not available]
-----	---

Student progression	Against % enrolled
UG to PG	
PG to M.Phil.	
PG to Ph.D.	
Ph.D. to Post-Doctoral	
Employed	
— Campus selection	
— Other than campus recruitment	
Entrepreneurship/Self-employment	

30.	Details of Infrastructural Facilities	
	Library	Departmental Library contains 60 books for the use of teachers and students
	Internet facilities for Staff & Students	Internet facility available in the Library with Wi-Fi connectivity
	Classrooms with ICT Facilities	Departmental computers and one LCD projector (on sharing basis). Practical IT classes of the students of Physics (Honours) are held in the Computer Centre of the college. One photocopier machine is available in the Central Library.

Laboratories	<p>Department of Electronics has three laboratories:</p> <p>Laboratory 1: Analog, Digital, Microprocessor and Computer Laboratory for B.Sc. Part-I/II/III</p> <p>Laboratory 2: Analog, Communication and Power Electronics Laboratory for postgraduate courses</p> <p>Laboratory 3: Digital, Microprocessor, Computer, Microcontroller and project laboratory for the postgraduate students.</p>
--------------	---

31.	Number of students receiving financial assistance from college, university, government or other agencies	College (Students' Aid Fund)	20
		Government(SC/ST/OBC/Minority Scholarships)	02

32.	Details on student enrichment programmes (special lectures / workshops/seminar) with external experts	NIL
-----	---	-----

33.	Teaching methods adopted to improve student learning	<ul style="list-style-type: none"> • Conventional method of teaching (Class lecture, interaction, board works etc) and interactive discussion between the teacher and the students • Occasional use of LCD projector in undergraduate classes • Use of LCD Projector as and when needed in postgraduate classes
-----	--	--

34	Participation in Institutional Social Responsibility (ISR) and Extension activities	<ul style="list-style-type: none"> • Students are encouraged in participating in Blood Donation Camps organized by Students' Union • Students are encouraged to participate in NCC/NSS activity of the college.
----	---	---

35.	SWOC analysis of the department and Future plans
	<p><u>Strength</u></p> <ul style="list-style-type: none"> • The concerted effort of one regular teacher, four young and enthusiastic Contractual Whole Time Teachers, and a few Guest Teachers provides academic service of good quality needed to run an Honours Course and one General Course. • Well equipped laboratories for both under- and postgraduate students • A number of renowned scientists regularly add valuable academic inputs in the capacity of Guest teachers to the young minds of bright students of Electronics • The study in Electronic Science at the postgraduate level is looked after by a Post Graduate Expert Committee comprising of several veteran Professors and Scientists <p><u>Weakness</u></p> <ul style="list-style-type: none"> • Four posts of regular teachers are lying vacant • Most of the teachers are non-Ph.D. • Only a few research activities at the departmental level • No National/State level Academic Seminar/Symposia held since a long time <p><u>Opportunity</u></p> <ul style="list-style-type: none"> • Subject to the appointment of new teachers (which is likely to be completed within a short time hence), many research options are shall be opened up. • Once this is done, the students (postgraduate) may be encouraged to take up research projects in the department itself <p><u>Challenge</u></p> <ul style="list-style-type: none"> • Striking a balance between the responsibilities within the college and the educational responsibilities given by authority of Calcutta University such as different confidential assignments • Maintaining records of the individual and collective activities of the department in the face of non-admissibility of appropriate support staff • Running a postgraduate course in laboratory-based subject under Course Specific Academic Autonomy (CSAA) warrants that there should be sufficient support staff and IT professional for carrying out official and documentary works. In absence of such support staff and IT professional, teachers themselves take the burden of doing everything in the students' interest. Had this not been so, challenges would have been much weaker making room for the teachers to discharge academic service in a much comfortable way.

Profile of the Zoology Department



The human resources in Zoology department

Students of Zoology are working in the lab.

1.	Name of the department	ZOOLOGY
2.	Year of Establishment	1969
3.	Names of Programmes / Courses offered (UG, PG, M.Phil., Ph.D., Integrated Masters; Integrated Ph.D., etc.)	UG + PG
4.	Names of interdisciplinary courses and the department/units involved	NIL
5.	Annual/ semester/choice based credit system (programme wise)	ANNUAL SYSTEM
6.	Participation of the department in the courses offered by other departments	NOT APPLICABLE
7.	Courses in collaboration with other universities, industries, foreign institutions, etc.	NOT APPLICABLE
8.	Details of courses/programmes discontinued (if any) with reasons	NOT APPLICABLE

9.	Number of Teaching posts
----	--------------------------

Category	Sanctioned	Filled
Professor*	—	—
Associate Professor**	—	—
Assistant Professor	8	7 (1 TEACHER RETD.)

*There is no post of Professor in Grant-In-Aid colleges

**Post of Assistant Professor is temporarily up graded to the Post of Associate Professor under Career Advancement Scheme (CAS)

10.	Faculty profile with name, qualification, designation, specialization, (D.Sc./D.Litt. Ph.D. / M. Phil. etc.,)
-----	---

Name	Qualification	Designation	Specialization	No. of Years of Experience	No. of Ph.D Students Guided in last 4 years
SHYAMASRI MUKHERJEE (Retd. on 31.10.2015)	M.SC.,PH.D.	ASSOCIATE PROFESSOR	Drosophila Genetics	21	NA
IPSIT CHAKRABAORTY	M.SC.,PH.D.	ASSOCIATE PROFESSOR	Parasitology & Biochemistry	20	NA
MAUSUMI BHATTACHARYA	M.SC.,PH.D.	ASSISTANT PROFESSOR	Aquatic Toxicology	14	NA
SUTAPA GUPTA	M.SC.,PH.D.	ASSOCIATE PROFESSOR	Genetic Toxicology	14	NA
SWAPNA BANDOPADHYAY	M.SC.,PH.D.	ASSOCIATE PROFESSOR	Biochemistry	14	NA
JOYDEEP DAS	M.SC.	ASSISTANT PROFESSOR	Endocrine Toxicology	7	NA
BANANI BINDHANI	M.SC.	ASSISTANT PROFESSOR	Immunology & DNA Damage	10 M	NA

11.	List of senior visiting faculty					
	Dr. Madhusudan Ghosal, Ex-Faculty, CU	Dr. Kanchan Mukherjee, Scientist, Monovikash Kendra				
	Dr. Biswatosh Dengupta, Ex-Member, Curriculum Development Committee (Visual Arts) , UGC	Dr. Manas Ranjan Roy, Retd. Scientist, Chittaranjan Cancer Institute, Kolkata				
	Dr. Lakshmi Kanta Ghosh, Ex-Scientist, ZSI	Dr. Ajoy Modal, Faculty, Asutosh College				
	Sri Udayan Mukherjee, Ex Faculty, Charu Chandra College, Kolkata	Sri Suman Bhattacharya, Faculty, Bangabasi College				
12.	Percentage of lectures delivered and practical classes handled (programme wise)by temporary faculty			Theory: 28.28% Practical:22.65%		
13.	Student-teacher ratio (programme-wise)			UG: 30.43 PG: 08.62		
14.	Number of Academic Support Staff (technical) and administrative staff; sanctioned and filled			One Graduate Laboratory Instructor (Teaching Staff) Support Staff: 2		
15.	Qualification of teaching faculty with		D.Sc	D.Litt	Ph.D	M.Phil
			0	0	5	0
						PG
						2

16.	Number of faculty with ongoing projects from	National Funding Agency	International Funding Agency
		Grants received	Grants Received
		NIL	NIL
17.	Departmental projects funded by DST-FIST;UGC,DBT,ICSSR etc, and total grants received		NIL
18.	Research Centre/facility recognized by the University		Not Applicable

19.	Publications: Publication per faculty
-----	---------------------------------------

NAMES OF THE FACULTY MEMBERS	SHYAMASRI MUKHERJEE	IPSIT CHAKRABARTY	MAUSUMI BHATTACHARYA	SUTAPA GUPTA	SWAPNA BANDOPADHYAY	JOYDEEP DAS	BANANI BINDHANI
Number of papers published in peer reviewed journals (national/International) by faculty and students	—	7	4	5	3	1	4
Number of publications listed in International Database (For Eg: Web of Science, Scopus, Humanities International Complete, Dare Database - International Social Sciences Directory, EBSCO host, etc.)	—	3	2	4	2	1	4
Monographs	—	—	—	—	—	—	—
Chapter in Books	—	—	—	1	—	—	—
Books Edited	—	—	—	—	—	—	—
Books with ISBN/ISSN numbers with details of publishers	—	—	—	—	—	—	—
Citation Index	—	—	—	—	—	—	—
SNIP	—	—	—	—	—	—	—
SJR	—	—	—	—	—	—	—
Impact Factor	—	—	—	—	—	—	—
hi-index	—	—	—	—	—	—	—

20.	Areas of consultancy and income generated	Not Applicable
-----	---	----------------




21.	Faculty as members in	National Committees	International Committees	Editorial Boards		
		Nil	Nil	Nil		
22.	Student Projects			<ul style="list-style-type: none">Submission of report of Project Work is mandatory for all (100%)M.Sc. Final year students1% for PG studnets		
	Percentage of students who have done in-house projects including inter departmental/programme Percentage of students placed for projects in organizations outside the institution <i>i.e.</i> , in Research laboratories/Industry/other agencies					
23.	Awards/recognitions received by the faculty and students			Nil		
24.	List of eminent academicians and scientists/visitors to the department	Prof. S.G. Pal, Calcutta Univer Prof. Madhusudan Ghoshal, Burdwan University Dr. Sandipan Ganguli, NAICED Prof. Sumit Hom Choudhury, Calcutta University Prof. Goutam Saha, Calcutta University				
25.	Seminars/Conferences/Workshops organized & the source of funding					
	(a)	National	One UGC-Sponsored National Seminar in the year 2012 along with the dept. of Zoology & Molecular Biology and in collaboration with National Institute of Cholera and Enteric Diseases, Kolkata			
	(b)	International	Nil			
26.	Student profile (programme/course wise)					
	Name of the Course/Programme (refer question No. 4)	Applications received	Selected	Enrolled *M *F	Pass Percentage	
	Undergraduate (Honours)	2011-12	1515	62	15 37	96.67
		2012-13	1560	53	29 21	100.00
		2013-14	1336	95	31 47	97.22
		2014-15	1751	100	28 54	97.22
	Postgraduate	2011-12	0423	45	12 23	100.00
		2012-13	0456	45	13 31	100.00
		2013-14	0393	45	19 22	100.00
		2014-15	418	50	09 31	100.00
	Undergraduate (Pass)	College does not keep such records at 'Pass' level				
*M= Male, *F=Female						
27.	Diversity of Students					
	Name of the Courses	% of students from the same state	% of students from the other state		% of the students from abroad	
	Undergraduate (Pass)	100%	NIL		NIL	
	Undergraduate (Honours)	100%	NIL		NIL	
	Postgraduate	100%	NIL		NIL	
28.	How many students have cleared national and state competitive examinations such as NET,SLET,GATE, Civil Services, Defence Services, etc. [verifiable data not available]					

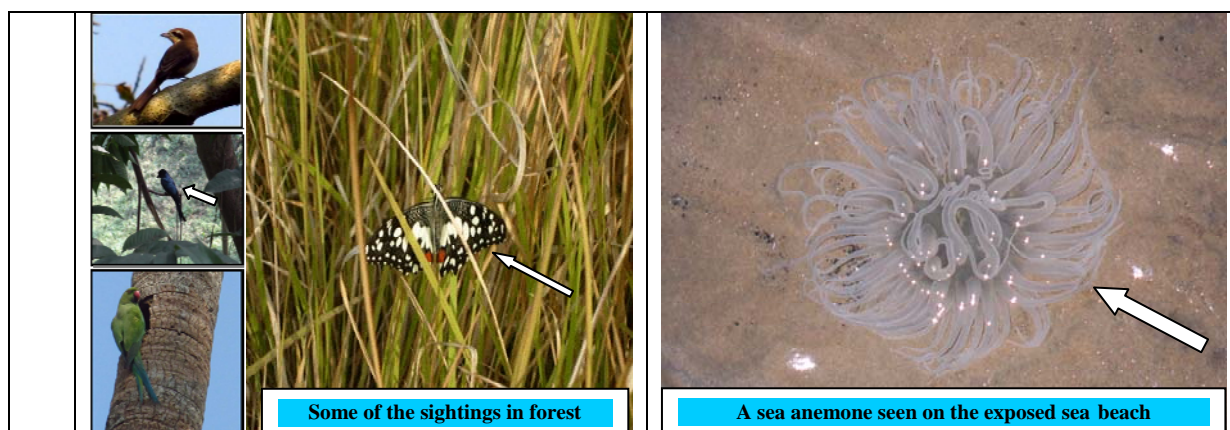
29.	Student progression [verifiable data not available]
-----	---

Student progression	Against % enrolled
UG to PG	
PG to M.Phil.	
PG to Ph.D.	
Ph.D. to Post-Doctoral	
Employed	
— Campus selection	
— Other than campus recruitment	
Entrepreneurship/Self-employment	

30.	Details of Infrastructural Facilities	
	Library	Departmental Library contains 439 books for the use of teachers and students
	Internet facilities for Staff & Students	Internet facility available in the Library with Wi-Fi connectivity
	Classrooms with ICT Facilities	<ul style="list-style-type: none"> • Conventional method of teaching (Class lecture, interaction, board works etc) and interactive discussion between the teacher and the students • Occasional use of LCD projector in undergraduate classes • Use of LCD Projector as and when needed in postgraduate classes
	Laboratories	Department of Zoology has 6 laboratories: <ul style="list-style-type: none"> • Two laboratories for the undergraduate students (for major/minor dissection of model animals, identification, biochemistry, histology & staining of histological materials etc,) • Six laboratories for the postgraduate students (a) General Zoology, (b) Fishery, Aquaculture, Ecology/Environmental Science & Toxicology (c) Genetics & Molecular Biology, (d) Parasitology-Immunology, (e) Endocrinology

31.	Number of students receiving financial assistance from college, university, government or other agencies	College (Students' Aid Fund)	14
		Government(SC/ST/OBC/Minority Scholarships)	02

32.	Details on student enrichment programmes (special lectures / workshops/seminar) with external experts		A number of eminent Guest Teachers regularly deliver lectures on curricular items of postgraduate students		
	Year	Duration	Spot	Accompanying Teachers & Staff	No. of Students
	2011	January 16-20	Sea Shore of Andhra Pradesh and adjoining areas	Prof. Somnath Mukhopadhyay Prof. Ipsit Chakrabarty Prof. Mousumi Bhattacharya Prof. Joydeep Das Sri Ranjit Mallick Sri Tapan Biswas	34
	2012	January 31-February 2	Digha-Mandarmoni Sea Beach of West Bengal	Prof. Somnath Mukhopadhyay Prof. Ratul K. Sinha (Now Retd.) Sri Subhas Chandra Dey Sri Ranjit Mallick	36
	2012	December 3-8	Forests of Dooars Area, West Bengal	Prof. Somnath Mukhopadhyay Prof. Mousumi Bhattacharya Prof. Joydeep Das Sri Ranjit Mallick Sri Nikhil Chandra Das	37
	2014	February 11-13	Bakhali Sea Beach area of West Bengal	Prof. Ipsit Chakrabarty Sri Subhas Chandra Dey Sri Ranjit Mallick	34
	2014	December 11-14	Forests of Dooars Area, West Bengal	Prof. Ipsit Chakrabarty Prof. Sutapa Gupta Sri Subhas Chandra Dey	55
					
	Pug Mark		A deer family		
					
	Quadrat analysis on sea beach		Study of Forest Biodiversity		



33.	Teaching methods adopted to improve student learning	<ul style="list-style-type: none"> • Conventional method of teaching (Class lecture, interaction, board works etc) and interactive discussion between the teacher and the students • Occasional use of LCD projector in undergraduate classes • Use of LCD Projector as and when needed in postgraduate classes • Students are frequently engaged in field work in some nearby place of Zoological interest
-----	--	---

34	Participation in Institutional Social Responsibility (ISR) and Extension activities	<ul style="list-style-type: none"> • Students are encouraged in participating in Blood Donation Camps organized by Students' Union • Students are encouraged to participate in NCC/NSS activity of the college
----	---	--

35.	SWOC analysis of the department and Future plans	
	<u>Strength</u> <ul style="list-style-type: none"> • Six out of eight sanctioned teaching posts are filled • Two undergraduate and one postgraduate programmes are run by the department • Teaching experience at the postgraduate and Honours level for about 15 and 30 years respectively • Very high demand for admission • Spacious laboratories with rich collection of instruments/equipment • Teachers' active involvements in multiple activities of the college both Curricular and Co-curricular • Emphasis on curricular enrichment process by arranging invited talks/seminar lectures by Guest Faculty members • All teachers are actively engaged in research by way of guiding the final year postgraduate students develop their Project Work. • Department has the opportunity to be academically benefitted from institutes like (1) Centre for research in Nano science and Nanotechnology, CU, (2) National Institute of Cholera and Enteric Diseases (ICMR), Kolkata, (3) Indian Institute of Chemical Biology (CSIR), Kolkata etc. <u>Weakness</u> <ul style="list-style-type: none"> • Formal research activity such as undertaking Major Research Projects/Minor Research Projects is less than expected less than expected from a department offering 	

	<p>postgraduate course</p> <ul style="list-style-type: none"> • No Academic Seminar/Symposia held after the National Seminar in 2011 • ICT infrastructure weaker than expected • Non-admissibility of any technical/administrative staff <p><u>Opportunity</u></p> <ul style="list-style-type: none"> • Having some 30 years experience of teaching Zoology at higher level, Zoology department can look forwards for establishment of 'Departmental Research Centre' for Lab-based/Theoretical research. • Possibilities of introduction of Departmental Magazine may be explored • Formal Departmental Seminars may be arranged in frequent intervals <p><u>Challenges</u></p> <ul style="list-style-type: none"> • Restricting increased intake of students to manageable number in the face of national target of increasing Gross Enrolment Ratio • Striking a balance between the work schedule related to Examination and teaching which is increasing at a rapid pace • Protecting the right and need of the students for a minimum number of classes against the essential responsibility of the department to hold 6-7 Practical Examinations every year • Maintaining records of the individual and collective activities of the department in the face of non-admissibility of appropriate support staff • Running a postgraduate course in laboratory-based subject under Course Specific Academic Autonomy (CSAA) warrants that there should be sufficient support staff and IT professional for carrying out official and documentary works. In absence of such support staff and IT professional, teachers themselves take the burden of doing everything in the students' interest. Had this not been so, challenges would have been much weaker making room for the teachers to discharge academic service in a much comfortable way.
--	--

S/N	Name of the Instruments/Equipment	Appropriate for
1	Vertical gel apparatus	Protein gel electrophoresis
2	Centrifuge	Centrifugation
3	Micro-centrifuge	Micro-centrifugation
4	Pipetteman pipette	Micropipetting
5	Microscope (Simple)	Simple micro observation
6	Compound Microscope	Microscopy
7	Binocular Microscope	Viewing larger objects
8	P ^H Meter	Measurement of P ^H
9	Spectrophotometer	Measurement of absorbance
10	Planimeter	Measurement of micro surface
11	Camera lucida	Drawing of Microscopic objects
12	Phase-contrast Microscope	Viewing unstained objects
13	BOD incubator	Maintaining Temperature and humidity
14	Thermostat	Maintaining constant temperature
15	Refrigerator	Preservation of materials
16	Hot plate	Controlled heating
17	Microtome	Sectioning of tissues
18	Vortex	Re-suspension of pellets
19	Magnetic stirrer	Dissolving solutes
20	Digital Balance	Weighing chemicals
21	Power pack	Electrophoresis

Profile of the Botany Department



Faculty members of the department of Botany



Students of Botany are seen learning

1.	Name of the department	BOTANY
2.	Year of Establishment	1956
3.	Names of Programmes / Courses offered (UG, PG, M.Phil., Ph.D., Integrated Masters; Integrated Ph.D., etc.)	UG
4.	Names of interdisciplinary courses and the department/units involved	NIL
5.	Annual/ semester/choice based credit system (programme wise)	ANNUAL SYSTEM
6.	Participation of the department in the courses offered by other departments	NOT APPLICABLE
7.	Courses in collaboration with other universities, industries, foreign institutions, etc.	NOT APPLICABLE
8.	Details of courses/programmes discontinued (if any) with reasons	NOT APPLICABLE

9.	Number of Teaching posts
----	--------------------------

Category	Sanctioned	Filled
Professor*	—	—
Associate Professor**	—	—
Assistant Professor	4	3

*There is no post of Professor in Grant-In-Aid colleges

**Post of Assistant Professor is temporarily up graded to the Post of Associate Professor under Career Advancement Scheme (CAS).

10.	Faculty profile with name, qualification, designation, specialization, (D.Sc./D.Litt. Ph.D. / M. Phil. etc.,)
-----	---

Name	Qualification	Designation	Specialization	No. of Years of Experience (years)	No. of Ph.D Students Guided in last 4 years
SUBHASIS SAHA	M.SC.	ASSOCIATE PROFESSOR	Ecology of Angiosperms	18	NA
JOY SARKAR	M.SC.	ASSISTANT PROFESSOR	Mycology & Plant Pathology	07	NA
MITHUN MAJI	M.SC.	ASSISTANT PROFESSOR	Microbiology & Biotechnology	05	NA
KRISHNA CKOWDHURY	PH.D.	*PTT	Plant Biodiversity	05	NA
INDRANI BANERJEE	M.SC.	*PTT	Plant Physiology & Biochemistry	05	NA

* Government approved Part Time Teacher

11.	List of senior visiting faculty				NIL		
12.	Percentage of lectures delivered and practical classes handled (programme wise)by temporary faculty				10.80%		
13.	Student-teacher ratio (programme-wise)				36.57		
14.	Number of Academic Support Staff (technical) and administrative staff; sanctioned and filled				Support Staff: 2 Administrative Staff: 0		
15.	Qualification of teaching faculty with	D.Sc	D.Litt	Ph.D	M.Phil	PG	
		0	0	0	0	3	
16.	Number of faculty with ongoing projects from	National Funding Agency		International Funding Agency			
		Grants received		Grants Received			
		One / 2,95,000/-		NIL			
17.	Departmental projects funded by DST-FIST;UGC,DBT,ICSSR etc, and total grants received				Not Applicable		
18.	Research Centre/facility recognized by the University				Not Applicable		

19.	Publications: Publication per faculty
-----	---------------------------------------

NAMES OF THE FACULTY MEMBERS	SUBHASIS SAHA	JOY SARKAR	MITHUN MAJI	KRISHNA CHOWDHURY (PTT)	INDRANI BANERJEE	—	—
Number of papers published in peer reviewed journals (national/International) by faculty and students	NA	19	03	04	—	—	—
Number of publications listed in International Database (For Eg: Web of Science, Scopus, Humanities International Complete, Dare Database - International Social Sciences Directory, EBSCO host, etc.)	NA	18	03	02	—	—	—
Monographs	NA	NA	NA	NA	—	—	—
Chapter in Books	NA	01	NA	NA	—	—	—
Books Edited	NA	NA	NA	NA	—	—	—
Books with ISBN/ISSN numbers with details of publishers	NA	NA	NA	NA	—	—	—
Citation Index	NA	NA	NA	NA	—	—	—
SNIP	NA	NA	NA	NA	—	—	—
SJR	NA	NA	NA	NA	—	—	—
Impact Factor	NA	39.45	12.06	NA	—	—	—
hi-index	NA	08	03	NA	—	—	—

20.	Areas of consultancy and income generated	Not Applicable
-----	---	----------------

21.	Faculty as members in	National Committees	International Committees	Editorial Boards
		Nil	Nil	Nil
22.	Student Projects			
	Percentage of students who have done in-house projects including inter departmental/programme		Nil	
	Percentage of students placed for projects in organizations outside the institution i.e.in Research laboratories/Industry/ other agencies			

23.	Awards/recognitions received by the faculty and students	Nil
-----	--	-----

24.	List of eminent academicians and scientists/visitors to the department	Nil
-----	--	-----

25.	Seminars/Conferences/Workshops organized & the source of funding	
(a)	National	NIL
(b)	International	NIL

26.	Student profile (programme/course wise)						
	Name of the Course/Programme (refer question No. 4)	Applications received		Selected	Enrolled		Pass Percentage
					*M	*F	
	Undergraduate (Honours)	2011-12	806	37	10	17	94.74
		2012-13	713	51	28	22	100.00
		2013-14	384	61	26	20	94.12
		2014-15	414	99	34	30	100.00
	Undergraduate (Pass)	College does not keep such records at 'Pass' level					
	Postgraduate	Not Applicable					

*M= Male, *F=Female

27.	Diversity of Students			
	Name of the Courses	% of students from the same state	% of students from the other state	% of the students from abroad
	Undergraduate (Pass)	100%	NIL	NIL
	Undergraduate (Honours)	100%	NIL	NIL
	Postgraduate	100%	NIL	NIL

28.	How many students have cleared national and state competitive examinations such as NET,SLET.GATE, Civil Services, Defence Services, etc.
-----	--

Verifiable data not available

29.	Student progression	
	Student progression	Against % enrolled (verifiable data not available)
	UG to PG	
	PG to M.Phil.	
	PG to Ph.D.	
	Ph.D. to Post-Doctoral	
	Employed	
	— Campus selection	
	— Other than campus recruitment	
	Entrepreneurship/Self-employment	

30.	Details of Infrastructural Facilities	
	Library	Departmental Library contains 138 books for the use of teachers and students
	Internet facilities for Staff & Students	Internet facility available in Computer centre, Teachers' Room, Library, and Office
	Classrooms with ICT Facilities	<ul style="list-style-type: none"> One dedicated Desk top Computer with Printer LCD Projector on sharing basis Photocopier machine is available in the Central Library

Laboratories	<ul style="list-style-type: none"> • Three laboratories with wooden tables with cupboards underneath fitted with porcelain basin, uninterrupted water connection, electrical connection with protective switch, stools, proper lighting and fanning facilities etc. • The Laboratory of the Botany Department harbours a number of instruments/equipments for the use of students. The notable ones are given below.
--------------	--

31.	Number of students receiving financial assistance from college, university, government or other agencies	College (Students' Aid Fund)	11
		Government(SC/ST/OBC/Minority Scholarships)	0

32.	Details on student enrichment programmes (special lectures / workshops/seminar) with external experts	Not Applicable
-----	---	----------------

33.	Teaching methods adopted to improve student learning	<ul style="list-style-type: none"> • Conventional Chalk & Talk • Sometimes Overhead Projector and/or LCD projector used for teaching • Students are frequently engaged in field work in some nearby place of botanical interest • Educational Excursion organized for students in distant places as well
-----	--	--

34	Participation in Institutional Social Responsibility (ISR) and Extension activities	<ul style="list-style-type: none"> • Students are encouraged in participating in Blood Donation Camps organized by Students' Union • Students are encouraged to participate in NCC/NSS activity of the college
----	---	--

35. SWOC analysis of the department and Future plans
<p><u>Strength</u></p> <ul style="list-style-type: none"> • Availability of young and enthusiastic teachers who are actively engaged in research as well • Three specious laboratories with good infrastructure facilities • A rich collection of study materials including (1) Microscopic specimens, (2) Models, (3) Charts, (4) Collection of Herbarium specimens, (5) Instruments and other learning tools such as Micrometer, Drawing Prisms etc. <p><u>Weakness</u></p> <ul style="list-style-type: none"> • A significant portion of the teachers are Non-Ph.D. • Restricted use of modern teaching methods • Non availability of Technical/Clerical Staff in the department • No academic seminar organized by the department for a long time <p><u>Opportunities</u></p> <ul style="list-style-type: none"> • Young and enthusiastic teachers' active involvement • Availability of good students <p><u>Challenges</u></p> <ul style="list-style-type: none"> • Finding time by the faculty members for doing all kind of the clerical works • General trend among the students to study Botany is declining sharply • Relatively little employment opportunity for the students of Botany in areas other than teaching and research.

Details of Educational Excursions conducted by the department of Botany from 2011 to 2014

Year	Name of Teachers & Staff who Conducted excursion	Location	Duration	Number of students
2011	1. Prof. Subhasis Saha 2. Prof. Joy Sarkar 3. Prof. Mithun Maji 4. Prof. Krishna Chowdhury 5. Prof. Indrani Banerjee 6. Nayan Ray	Panchmadi areas of Madhya Pradesh	30.01.2011 to 06.02.2011	45
2012	1. Prof. Joy Sarkar 2. Prof. Mithun Maji 3. Prof. Krishna Chowdhury 4. Musaref Ali Laskar	Gangtok & adjoining areas	30.11.2012 To 07.12.2012	21
2014	1. Prof. Joy Sarkar 2. Prof. Mithun Maji 3. Prof. Indrani Banerjee 4. Sri Nayan Ray	Darjeeling and Adjoining areas.	18.03.2014 To 23.03.2014	26
2015	1. Prof. Joy Sarkar 2. Prof. Krishna Chowdhury 3. Sri Nayan Ray	Western Ghat and Adjoining areas.	10.01.2015 To 17.01.2015	26



Students are studying some unknown plant species



Students are seen studying plant biodiversity in a forest



Study of plant biodiversity under teachers' guidance



Study of forest floral diversity



**Quadrat Analysis
Study of forest plant biodiversity**



**Quadrat Analysis
Students preparing specimens**



Collection of twigs



Herbarium specimen Preparation

List of Instruments in the Department of Botany

S/N	Name of the Instruments/Equipment	Appropriate
1	Simple Microscope	Taxonomic study
2	Compound Microscope	Microscopy
3	Autoclave	Sterilization of media
4	Digital Balance	Media measurement
5	Microtome	Thin sectioning
6	Refrigerator	Preservation
7	Drier	Drying of glass goods
8	Hot air oven	Drying of materials
9	Pan Balance	Media and biochemical goods measurement

Profile of the Microbiology Department



Students of Microbiology are seen learning under the caring and watchful eye of the teachers



Students of Microbiology are seen performing experiments themselves

1.	Name of the department	MICROBIOLOGY
2.	Year of Establishment	1997
3.	Names of Programmes / Courses offered (UG, PG, M.Phil., Ph.D., Integrated Masters; Integrated Ph.D., etc.)	UG
4.	Names of interdisciplinary courses and the department/units involved	NIL
5.	Annual/ semester/choice based credit system (programme wise)	ANNUAL SYSTEM
6.	Participation of the department in the courses offered by other departments	NOT APPLICABLE
7.	Courses in collaboration with other universities, industries, foreign institutions, etc.	NOT APPLICABLE
8.	Details of courses/programmes discontinued (if any) with reasons	NOT APPLICABLE

9.	Number of Teaching posts	
	Category	Filled
	Sanctioned	
	Professor*	—
	Associate Professor**	—
	Assistant Professor	3

*There is no post of Professor in Grant-In-Aid colleges

**Post of Assistant Professor is temporarily up graded to the Post of Associate Professor under Career Advancement Scheme (CAS)

10.	Faculty profile with name, qualification, designation, specialization, (D.Sc./D.Litt. Ph.D. / M. Phil. etc.,)
-----	---

Name	Qualification	Designation	Specialization	No. of Years of Experience	No. of Ph.D Students Guided in last 4 years
SWAPNA MUKHERJEE	M.SC., PH.D.	ASSISTANT PROFESSOR	Microbial Genetics	14 years	NA
SUBHASREE ROY	M.SC.	*CWTT		5 Years	NA
RATNA CHINA	M.SC.	*CWTT		5 Years	NA

*Government approved Contractual Whole Time Teacher

11.	List of senior visiting faculty					
12.	Percentage of lectures delivered and practical classes handled (programme wise)by temporary faculty			17.18%		
13.	Student-teacher ratio (programme-wise)			33.16		
14.	Number of Academic Support Staff (technical) and administrative staff; sanctioned and filled			Support Staff: 2 Administrative Staff: 0		
15.	Qualification of teaching faculty with	D.Sc	D.Litt	Ph.D	M.Phil	PG
		0	0	1	0	0
16.	Number of faculty with ongoing projects from	National Funding Agency		International Funding Agency		
		Grants received		Grants Received		
		01		NIL		
17.	Departmental projects funded by DST-FIST;UGC,DBT,ICSSR etc, and total grants received			UGC Funded Research Project of Rs. 134750.00(No. F.PHW-049/11-12 (ERO)		
18.	Research Centre/facility recognized by the University			Not Applicable		

19.	Publications: Publication per faculty
-----	---------------------------------------

NAMES OF THE FACULTY MEMBERS	SWAPNA MUKHERJEE	RATNA CHINA	SUBHOSREE ROY				
Number of papers published in peer reviewed journals (national/International) by faculty and students	12	2	—				
Number of publications listed in International Database (For Eg: Web of Science, Scopus, Humanities International Complete, Dare Database - International Social Sciences Directory, EBSCO host, etc.)	—	—	—				
Monographs	—	—	—				
Chapter in Books	2	—	—				
Books Edited	—	—	—				
Books with ISBN/ISSN numbers with details of publishers	—	—	—				
Citation Index	—	—	—				
SNIP	—	—	—				
SJR	—	—	—				
Impact Factor	—	—	—				
hi-index	—	—	—				

20.	Areas of consultancy and income generated	Not Applicable
-----	---	----------------

21.	Faculty as members in	National Committees	International Committees	Editorial Boards
		Nil	Nil	Nil
22.	Student Projects			
	Percentage of students who have done in-house projects including inter departmental/programme			
	Percentage of students placed for projects in organizations outside the institution i.e.in Research laboratories/Industry/ other agencies			Not Applicable

23.	Awards/recognitions received by the faculty and students	Nil
-----	--	-----

24.	List of eminent academicians and scientists/visitors to the department	NIL
-----	--	-----

25.	Seminars/Conferences/Workshops organized & the source of funding	
(a)	National	One UGC-Sponsored National Seminar in the year 2012 along with the dept. of Zoology & Mol. Biol. and in collaboration with National Institute of Cholera and Enteric Diseases, Kolkata
(b)	International	Not Applicable

26.	Student profile (programme/course wise)						
	Name of the Course/Programme (refer question No. 4)	Applications received		Selected	Enrolled		Pass Percentage
					*M	*F	
	Undergraduate (Honours)	2011-12	965	16	5	11	100.00
		2012-13	858	45	16	29	83.33
		2013-14	771	42	9	19	95.24
		2014-15	775	58	22	26	100.00
	Postgraduate	Not Applicable					

*M= Male, *F=Female

27.	Diversity of Students			
	Name of the Courses	% of students from the same state	% of students from the other state	% of the students from abroad
	Undergraduate (Pass)	100%	NIL	NIL
	Undergraduate (Honours)	100%	NIL	NIL
	Postgraduate	100%	NIL	NIL

28.	How many students have cleared national and state competitive examinations such as NET, SLET, GATE, Civil Services, Defence Services, etc. (verifiable data not available)
-----	--

29.	Student progression
-----	---------------------

Student progression	Against % enrolled (verifiable data not available)
UG to PG	
PG to M.Phil.	
PG to Ph.D.	
Ph.D. to Post-Doctoral	
Employed	
— Campus selection	
— Other than campus recruitment	
Entrepreneurship/Self-employment	

30.	Details of Infrastructural Facilities	
	Library	A rich departmental Library harbours 142 books authored by globally renowned Scientists or Professors. Both students and the teachers are immensely benefitted out of this Departmental

	Library
Internet facilities for Staff & Students	High speed internet connectivity is available in the computer centre and the Central Library
Classrooms with ICT Facilities	Departmental Computer, Printer, Scanner and LCD Projector (on sharing basis) Photocopier machine available in the Central Library
Laboratory	
There are two well equipped laboratories in the Department of Microbiology. Total laboratory space is divided into three main parts to serve different purposes:	
<p>1. Media preparation room/Central working area:</p> <p>This is the main work area where media preparation, sterilization and incubation of cultures are done. There are central workbenches with cupboards and drawers. Common equipments (autoclaves, microscopes, incubators, refrigerators, shakers etc) and consumables (glass goods, media supplements and reagents) are kept in this area on the workbenches and racks fitted along the wall.</p> <p>2. Inoculation and culture maintenance room:</p> <p>This area is suitable for aseptic techniques and molecular biological works. There is 'Laminar air flow hood' to provide aseptic workplace and to protect workers from hazardous experiments. The room is air-conditioned to maintain a continuous temperature of 25°C. Multiple types of refrigerators are kept here to maintain and preserve cultures and media supplements. Sophisticated instruments (Thermo cycler, Gel Electrophoresis Apparatus and Gel doc system, Spectrophotometer etc.) are kept at an extended portion of this room.</p> <p>3. Washing and Disinfection area:</p> <p>Washing area is fitted with sinks with draining boards and continuous water supply at a low pressure. Separate containers (properly labelled) are kept for destruction of used cultures and their disposal.</p> <p>In general, all bench and table tops in the culture maintenance room, media preparation room and washing room are laid with smooth sun mica. Storage cupboards for glassware and chemicals are put up at appropriate places on the walls in the testing laboratory, washing room and media preparation room. An uninterrupted power supply is available day and night; a backup generator is also available at the time of need.</p> <p>The list of instruments/equipment available is annexed at the end of the departmental profile:</p>	

31.	Number of students receiving financial assistance from college, university, government or other agencies	College (Students' Aid Fund)	07
		Government(SC/ST/OBC/Minority Scholarships)	0

32.	Details on student enrichment programmes (special lectures / workshops/seminar) with external experts	1.	Organized 'Two-day Interactive Students' Seminar on Microbiology on December 17-18, 2010, Kolkata
		2.	Joined UGC-Sponsored Vocational Course on 'Food and Drug Safety', in June, 2011, Lady Brabourne College, Kolkata
		3.	Participated in Bio-safety and Public Health Awareness Campaign on 'Prevention of Diarrhoea Diseases' at I.D. Hospital, Kolkata
		4.	Participated in UGC-sponsored National Seminar on 'Modern Biology and its Impact on Public Health' held on 18th January, 2012
		5.	Participated in Essay Writing Competition on 'Bigyan Chorchay Bangla O Bangalee' on 6-7 March, 2014
		6.	Participated in one-day workshop on Biotechnology on 25 th January, 2014 organized by Calcutta University

33.	Teaching methods adopted to improve student learning	1.	Lecture Notes, Assignments, and discussions have been grouped into Units & Chapters strictly maintaining Academic Calendar. Laboratory Manuals containing materials and methods have also been prepared
		2.	Power Point presentations are arranged on SOS basis

34	Participation in Institutional Social Responsibility (ISR) and Extension activities	1.	Participated in Blood Donation Camps organized by the Students' Union at least once in a year
		2.	Testing of drinking water samples
		3.	Conducting tests of Antibiotic sensitivity of Urine samples of patients (voluntary donors)

35.	SWOC analysis of the department and Future plans		
	<u>Strength</u> <ul style="list-style-type: none"> • Very high demand for admission • Spacious laboratories with rich collection of instruments/equipment • Teachers' active involvements in multiple activities of the college both Curricular and Co-curricular • Emphasis on curricular enrichment process by arranging invited talks/seminar lectures by Guest Faculty members • All teachers are actively engaged in research • Frequent interaction between Academia and Industry (Dairy/Bakery/Agro Industry/Distillery) • Department has the opportunity to be academically benefitted from institutes like (1) Centre for research in Nanoscience and Nanotechnology, CU, (2) National Institute of Cholera and Enteric Diseases (ICMR), Kolkata, (3) Indian Institute of Chemical Biology (CSIR), Kolkata etc. 		

	Weakness
	<ul style="list-style-type: none"> Two teaching posts are vacant Formal research activity such as undertaking Major Research Projects/Minor Research Projects is less than expected less than expected from a department offering postgraduate course No Academic Seminar/Symposia held after the National Seminar in 2011 ICT infrastructure weaker than expected Non-admissibility of any technical/administrative staff
	Opportunity
	<ul style="list-style-type: none"> Having some 30 years experience of teaching Zoology at higher level, Zoology department can look forwards for establishment of 'Departmental Research Centre' for Lab-based/Theoretical research. Possibilities of introduction of Departmental Magazine may be explored Formal Departmental Seminars may be arranged in frequent intervals
	Challenges
	<ul style="list-style-type: none"> Restricting increased intake of students to manageable number in the face of national target of increasing Gross Enrolment Ratio Striking a balance between the work schedule related to Examination and teaching which is increasing at a rapid pace Protecting the right and need of the students for a minimum number of classes against the essential responsibility of the department to hold 6-7 Practical Examinations every year Maintaining records of the individual and collective activities of the department in the face of non-admissibility of appropriate support staff

List of Instruments Equipment available in the department of Microbiology:

S/N	Name of the Instruments	Purpose/Usefulness/Utility
1	AUTOCLAVE (× 2)	Sterilization of glass goods & Chemicals
2	BENCH TOP MICRO CENTREFUGE(× 2)	Micro-centrifugation
3	BOD INCUBATOR SHAKER(× 2)	Maintenance of temperature & humidity
4	COLONY COUNTER(× 1)	Counting number of bacterial colonies
5	COLORIMETER(× 2)	Measurement of absorbance of light
6	DIGITAL BALANCE(× 2)	Weighing small to very small quantity
7	ELECTROPHORESIS POWER PACK(× 2)	Source of power for electrophoresis
8	GEL APPARATUS(× 2)	Electrophoresis of bio-macromolecules
9	GEL DOCUMENTATION SYSTEM(× 1)	Recording & analysis of electrophoresis data
10	HEAMOCYTOMETER(× 13)	Direct counting of cells in culture
11	HOT AIR OVEN(× 1)	Heat sterilization, drying of materials
12	HOTPLATE(× 2)	Heating of chemicals/bacterial media/liquid
13	LAMINER AIRFLOW(× 2)	Maintenance of aseptic work space for work
14	MAGNETIC STIRRER(× 1)	Used for prolonged stirring of liquids
15	MICRO OVEN(× 1)	For instant heating of solid media for plating
16	MICROMETER(× 9)	Measurement of microbial length
17	MICROPIPETTE(× 13)	Addition of liquids of minute volumes
18	MICROSCOPE(× 34)	Microscopic examination of microbes
19	MINI COOLAR(× 2)	Bench top cooler
20	THERMO CYCLER FOR PCR(× 1)	Artificial amplification of DNA sequence
21	P ^H METER(× 2)	Measurement of acidity/alkalinity of media
22	PIPETTOR STAND(× 3)	For keeping pipettes and micropipettes
23	REFREGERATOR (4°C) (× 4)	Storage of Chemicals/culture/media

S/N	Name of the Instruments	Purpose/Usefulness/Utility
24	REFRIGERATOR (-20°C) (× 1)	Long-term storage of culture/chemicals
25	SPECTROPHOTOMETER(× 1)	Quantisation of bio-molecule at UV-VIS range
26	STERIPIPETE(× 1)	Pipetting out hazardous chemicals
27	SYRINGE FILTER(× 1)	Filtering of heat sensitive bio-chemicals
28	UV TRANSLUMINATOR(× 2)	To observe and analyse DNA gel plates
29	VACUUM PUMP(× 1)	For operating vacuum evaporator
30	VACUUM EVAPORATOR(× 1)	For concentrating volatile solvent
31	VORTEX MIXTURE(× 1)	For mixing of micro volume of bio-molecules
32	WATER BATH(× 1)	Indirect heating of liquids

Details of Educational Excursion conducted by the department of Microbiology

Place of visit	Date	No. of Students	Accompanying Teachers	Accompanying Non-teaching staff
Vishakha Dairy, Visakhapatnam	04.12.2010	16	Dr.Swapna Mukherjee Smt. Ratna China	Sri M.G. Debnath
Bolpur Dairy, Bolpur	24.09.2011	14	Dr.Swapna Mukherjee Smt. Ratna China	Sri M.G. Debnath Sri Sushil Mondal
Nimpith Mission, Nimpith	14.03.2012	27	Dr.Swapna Mukherjee Smt. Ratna China	--
Mother Dairy, Dankuni	27.01.2013	10	Dr.Swapna Mukherjee Smt. Subhosree Roy	Sri M.G. Debnath Sri Sushil Mondal
Monginis Bakery, Sankrail	18.11.2014	26	Dr.Swapna Mukherjee Smt. Ratna China	Sri M.G. Debnath Sri Sushil Mondal
Mother Dairy, Dankuni	24.11.2015	17	Dr.Swapna Mukherjee Smt. Ratna China	Sri M.G. Debnath Sri Sushil Mondal

[illegible]

1.	Name of the department	MOLECULAR BIOLOGY
2.	Year of Establishment	1979
3.	Names of Programmes / Courses offered (UG, PG, M.Phil., Ph.D., Integrated Masters; Integrated Ph.D., etc.)	UG
4.	Names of interdisciplinary courses and the department/units involved	NIL
5.	Annual/ semester/choice based credit system (programme wise)	ANNUAL SYSTEM
6.	Participation of the department in the courses offered by other departments	NOT APPLICABLE
7.	Courses in collaboration with other universities, industries, foreign institutions, etc.	NOT APPLICABLE
8.	Details of courses/programmes discontinued (if any) with reasons	NOT APPLICABLE

Category	Sanctioned	Filled
Professor*	—	—
Associate Professor**	—	—
Assistant Professor	1	1

****Post of Assistant Professor is temporarily up graded to the Post of Associate Professor under Career Advancement Scheme (CAS)**

10.	Faculty profile with name, qualification, designation, specialization, (D.Sc./D.Litt. Ph.D. / M. Phil. etc.,)
-----	---

Name	Qualification	Designation	Specialization	No. of Years of Experience	No. of Ph.D Students Guided in last 4 years
JAYANTI GUHA ROY	M.SC., PH.D.	ASSOCIATE PROFESSOR	Spectroscopic Studies of Different Bio-molecules	15	NIL

11.	List of senior visiting faculty				Nil		
12.	Percentage of lectures delivered and practical classes handled (programme wise)by temporary faculty				Nil		
13.	Student-teacher ratio (programme-wise)						
14.	Number of Academic Support Staff (technical) and administrative staff; sanctioned and filled				Support Staff: 1 Administrative Staff: 0		
15.	Qualification of teaching faculty with	D.Sc	D.Litt	Ph.D	M.Phil	PG	
		0	0	1	0	0	
16.	Number of faculty with ongoing projects from	National Funding Agency		International Funding Agency			
		Grants received		Grants Received			
		NIL		NIL			
17.	Departmental projects funded by DST-FIST;UGC,DBT,ICSSR etc, and total grants received				Nil		
18.	Research Centre/facility recognized by the University				Not Applicable		

19.	Publications: Publication per faculty
-----	---------------------------------------

NAMES OF THE FACULTY MEMBERS	JAYANTI GUHA ROY						
	Number of papers published in peer reviewed journals (national/International) by faculty and students	20					
	Number of publications listed in International Database (For Eg: Web of Science, Scopus, Humanities International Complete, Dare Database - International Social Sciences Directory, EBSCO host, etc.)	—					
	Monographs	—					
	Chapter in Books	—					
	Books Edited	—					
	Books with ISBN/ISSN numbers with details of publishers	—					
	Citation Index	—					
	SNIP	—					
	SJR	—					
	Impact Factor	—					
	hi-index	—					

20.	Areas of consultancy and income generated	Not Applicable
-----	---	----------------

21.	Faculty as members in	National Committees	International Committees	Editorial Boards
		Nil	Nil	Nil
22.	Student Projects			Not Applicable
	Percentage of students who have done in-house projects including inter departmental/programme Percentage of students placed for projects in organizations outside the institution i.e.in Research laboratories/Industry/ other agencies			

23.	Awards/recognitions received by the faculty and students	Nil
-----	--	-----

24.	List of eminent academicians and scientists/visitors to the department	Nil
-----	--	-----

25.	Seminars/Conferences/Workshops organized & the source of funding		
(a)	National	One UGC-Sponsored National Seminar in the year 2012 along with the dept. of Zoology & Microbiology and in collaboration with National Institute of Cholera and Enteric Diseases, Kolkata	
(b)	International	Not Applicable	

26.	Student profile (programme/course wise)				
	Name of the Course/Programme (refer question No. 4)	Applications received	Selected	Enrolled *M *F	Pass Percentage
	Undergraduate (Pass)	College does not keep such records at 'Pass' level			
	Undergraduate (Honours)	Not in offer			
	Postgraduate				

*M= Male, *F=Female

27.	Diversity of Students			
	Name of the Courses	% of students from the same state	% of students from the other state	% of the students from abroad
	Undergraduate (Pass)	100%	NIL	NIL
	Undergraduate (Honours)	100%	NIL	NIL
	Postgraduate	100%	NIL	NIL

28.	How many students have cleared national and state competitive examinations such as NET, SLET, GATE, Civil Services, Defence Services, etc. (verifiable data not available)
-----	--

29.	Student progression (verifiable data not available)	
	Student progression	Against % enrolled
	UG to PG	
	PG to M.Phil.	
	PG to Ph.D.	
	Ph.D. to Post-Doctoral	
	Employed — Campus selection — Other than campus recruitment	
	Entrepreneurship/Self-employment	

30.	Details of Infrastructural Facilities	
	Library	Not Applicable
	Internet facilities for Staff & Students	High speed internet connectivity is available in the computer centre and the Central Library
	Classrooms with ICT Facilities	Departmental Computer, Printer, Scanner and LCD Projector (on sharing basis) Photocopier machine available in the Central Library
	Laboratories	There are two separate laboratories in the department of Molecular Biology one each for (1) Biochemistry and (2) Biophysics

31.	Number of students receiving financial assistance from college, university, government or other agencies	College (Students' Aid Fund)	0
		Government(SC/ST/OBC/Minority Scholarships)	0
32.	Details on student enrichment programmes (special lectures / workshops/seminar) with external experts	NIL	
33.	Teaching methods adopted to improve student learning	<ul style="list-style-type: none">Lecture Notes, Assignments, and discussions have been grouped into Units & Chapters strictly maintaining Academic Calendar. Laboratory Manuals containing materials and methods have also been preparedPower Point presentations are arranged on SOS basis	
34	Participation in Institutional Social Responsibility (ISR) and Extension activities	<ul style="list-style-type: none">Students are encouraged in participating in Blood Donation Camps organized by Students' UnionStudents are encouraged to participate in NCC/NSS activity of the college	
35.	SWOC analysis of the department and Future plans		
	<u>Strength</u> <ul style="list-style-type: none">The only teacher of the department possess a number of research papers to her credit published in journals of reputeTwo laboratories one each for Biochemistry and Biophysics		
	<u>Weakness</u> <ul style="list-style-type: none">Only one teacher in the departmentTeaching restricted to General level onlyDarth of students possibly due to very low job opportunityVery few or no research activity at the departmental levelNo Academic Seminar/Symposia held after 2012Less emphasis on curricular enrichment by arranging invited talks/seminar lectures		
	<u>Opportunity</u> <ul style="list-style-type: none">Possibilities of introduction of Departmental Magazine may be exploredDepartmental Seminars may be arranged in frequent intervals		
	<u>Challenges</u> <ul style="list-style-type: none">Retaining only few students available		

Profile of the Sericulture Department



Practical demonstration of some aspects of Sericulture



A heap of Silk Moth Cocoon awaits transformation into Silk

1.	Name of the department	SERICULTURE
2.	Year of Establishment	1996
3.	Names of Programmes / Courses offered (UG, PG, M.Phil., Ph.D., Integrated Masters; Integrated Ph.D., etc.)	UG
4.	Names of interdisciplinary courses and the department/units involved	NIL
5.	Annual/ semester/choice based credit system (programme wise)	ANNUAL SYSTEM
6.	Participation of the department in the courses offered by other departments	NOT APPLICABLE
7.	Courses in collaboration with other universities, industries, foreign institutions, etc.	NOT APPLICABLE
8.	Details of courses/programmes discontinued (if any) with reasons	NOT APPLICABLE

9.	Number of Teaching posts
----	--------------------------

Category	Sanctioned	Filled
Professor*	—	—
Associate Professor*	—	—
Assistant Professor	0	0

*There is no post of Professor in Grant-In-Aid colleges

**Post of Assistant Professor is temporarily up graded to the Post of Associate Professor under Career Advancement Scheme (CAS)

10.	Faculty profile with name, qualification, designation, specialization, (D.Sc./D.Litt. Ph.D. / M. Phil. etc.,)
-----	---

Name	Qualification	Designation	Specialization	No. of Years of Experience	No. of Ph.D Students Guided in last 4 years
MADHUJAYA DASGUPTA	M.SC.	PART TIME TEACHER	Sericulture	5	NA
MRITTIKA SENGUPTA	M.SC.	PART TIME TEACHER	Genetics	5	NA

11.	List of senior visiting faculty					NIL	
12.	Percentage of lectures delivered and practical classes handled (programme wise)by temporary faculty					NIL	
13.	Student-teacher ratio (programme-wise)					23.00	
14.	Number of Academic Support Staff (technical) and administrative staff; sanctioned and filled					Support Staff: 1 Administrative Staff: 0	
15.	Qualification of teaching faculty with	D.Sc	D.Litt	Ph.D	M.Phil	PG	
		0	0	0	0	0	
16.	Number of faculty with ongoing projects from	National Funding Agency		International Funding Agency			
		Grants received		Grants Received			
		NIL		NIL			
17.	Departmental projects funded by DST-FIST,UGC,DBT,ICSSR etc, and total grants received				NIL		
18.	Research Centre/facility recognized by the University				Not Applicable		

19.	Publications: Publication per faculty
-----	---------------------------------------

NAMES OF THE FACULTY MEMBERS	MADHUJAYA DASGUPTA	MRITTIKA SENGUPTA					
Number of papers published in peer reviewed journals (national/International) by faculty and students	—	—					
Number of publications listed in International Database (For Eg: Web of Science, Scopus, Humanities International Complete, Dare Database - International Social Sciences Directory, EBSCO host, etc.)	—	—					
Monographs	—	—					
Chapter in Books	—	—					
Books Edited	—	—					
Books with ISBN/ISSN numbers with details of publishers	—	—					
Citation Index	—	—					
SNIP	—	—					
SJR	—	—					
Impact Factor	—	—					
hi-index	—	—					

20.	Areas of consultancy and income generated
-----	---

Not Applicable

21.	Faculty as members in	National Committees	International Committees	Editorial Boards
		NOT APPLICABLE	NOT APPLICABLE	NOT APPLICABLE
22.	Student Projects			
	Percentage of students who have done in-house projects including inter departmental/programme Percentage of students placed for projects in organizations outside the institution i.e.in Research laboratories/Industry/ other agencies			Not Applicable

23.	Awards/recognitions received by the faculty and students	
-----	--	--

24.	List of eminent academicians and scientists/visitors to the department
-----	--

25.	Seminars/Conferences/Workshops organized & the source of funding	
	(a) National	
	(b) International	Not Applicable

26.	Student profile (programme/course wise)						
	Name of the Course/Programme (refer question No. 4)	Applications received		Selected	Enrolled		Pass Percentage
					*M	*F	
	Undergraduate (Major)	2011-12	69	0	0	0	100.00
		2012-13	50	4	0	0	100.00
		2013-14	60	8	3	5	87.50
		2014-15	40	12	2	1	----
	Undergraduate (Pass)	Not on offer					
	Postgraduate	Not on offer					

*M= Male, *F=Female

27.	Diversity of Students			
	Name of the Courses	% of students from the same state	% of students from the other state	% of the students from abroad
	Undergraduate (Pass)	100%	NIL	NIL
	Undergraduate (Honours)	100%	NIL	NIL
	Postgraduate	100%	NIL	NIL

28.	How many students have cleared national and state competitive examinations such as NET,SLET.GATE, Civil Services, Defence Services, etc.
-----	--

29.	Student progression
-----	---------------------

Student progression	Against % enrolled
UG to PG	
PG to M.Phil.	
PG to Ph.D.	
Ph.D. to Post-Doctoral	
Employed	
— Campus selection	
— Other than campus recruitment	
Entrepreneurship/Self-employment	

30.	Details of Infrastructural Facilities	
	Library	Departmental Library contains 146 books for the use of teachers and students
	Internet facilities for Staff & Students	Internet facility available in the Library with Wi-Fi connectivity
	Classrooms with ICT Facilities	
	Laboratories	

31.	Number of students receiving financial assistance from college, university, government or other agencies	College (Students' Aid Fund)	02
		Government(SC/ST/OBC/Minority Scholarships)	0

32.	Details on student enrichment programmes (special lectures / workshops/seminar) with external experts	NIL
-----	---	-----

33.	Teaching methods adopted to improve student learning	<ul style="list-style-type: none"> • Conventional Chalk & Talk • Sometimes Overhead Projector and/or LCD projector used for teaching • Students are frequently engaged in field work
-----	--	---

34.	Participation in Institutional Social Responsibility (ISR) and Extension activities	<ul style="list-style-type: none"> • Students are encouraged in participating in Blood Donation Camps organized by Students' Union • Students are encouraged to participate in NCC/NSS activity of the college
-----	---	--

35.	SWOC analysis of the department and Future plans
	SWOC analysis of the department and Future plans
	<p><u>Strength</u></p> <ul style="list-style-type: none"> • Highly qualified faculty members <p><u>Weakness</u></p> <ul style="list-style-type: none"> • No sanctioned teaching post • Only two Part Time Teachers run the department • Dearth of students possibly due to very low job opportunity • Very few or no research activity at the departmental level • Less emphasis on curricular enrichment by arranging invited talks/seminar lectures <p><u>Opportunity</u></p> <ul style="list-style-type: none"> • Possibilities of introduction of Departmental Magazine may be explored • Departmental Seminars may be arranged in frequent intervals <p><u>Challenges</u></p> <ul style="list-style-type: none"> • Retaining only few students available

Profile of the Economics Department



The Human Resource of Economics Department



Economics dictates the material world these days

1.	Name of the department	ECONOMICS
2.	Year of Establishment	1956
3.	Names of Programmes / Courses offered (UG, PG, M.Phil., Ph.D., Integrated Masters; Integrated Ph.D., etc.)	UG
4.	Names of interdisciplinary courses and the department/units involved	NIL
5.	Annual/ semester/choice based credit system (programme wise)	ANNUAL SYSTEM
6.	Participation of the department in the courses offered by other departments	NOT APPLICABLE
7.	Courses in collaboration with other universities, industries, foreign institutions, etc.	NOT APPLICABLE
8.	Details of courses/programmes discontinued (if any) with reasons	NOT APPLICABLE

9.	Number of Teaching posts	
	Category	Sanctioned
	Professor*	—
	Associate Professor*	—
	Assistant Professor	4
		Filled
		3

*There is no post of Professor in Grant-In-Aid colleges

**Post of Assistant Professor is temporarily up graded to the Post of Associate Professor under Career Advancement Scheme (CAS)

10.	Faculty profile with name, qualification, designation, specialization, (D.Sc./D.Litt. Ph.D. / M. Phil. etc.,)
-----	---

Name	Qualification	Designation	Specialization	No. of Years of Experience	No. of Ph.D Students Guided in last 4 years
RANJINI LAHIRI	M.SC., M.PHIL.	ASSOCIATE PROFESSOR	STATISTICS & ECONOMETRICS	23	NIL
SUMANA DUTTA	M.SC.	ASSISTANT PROFESSOR	STATISTICS & ECONOMETRICS	5Y6M	NIL
JHUMUR SENGUPTA	M.SC., PH.D.	ASSISTANT PROFESSOR	ECONOMETRY	1Y6M	1

11.	List of senior visiting faculty					Nil	
12.	Percentage of lectures delivered and practical classes handled (programme wise)by temporary faculty					NIL	
13.	Student-teacher ratio (programme-wise)					11.33	
14.	Number of Academic Support Staff (technical) and administrative staff; sanctioned and filled					Support Staff: 0 Administrative Staff: 0	
15.	Qualification of teaching faculty with	D.Sc	D.Litt	Ph.D	M.Phil	PG	
		0	0	1	1	1	
16.	Number of faculty with ongoing projects from	National Funding Agency		International Funding Agency			
		Grants received		Grants Received			
		NIL		NIL			
17.	Departmental projects funded by DST-FIST; UGC,DBT,ICSSR etc, and total grants received				NIL		
18.	Research Centre/facility recognized by the University				Nil		

19.	Publications: Publication per faculty
-----	---------------------------------------

NAMES OF THE FACULTY MEMBERS	RANJINI LAHIRI	SUMANA DUTTA	JHUMUR SENGUPTA				
Number of papers published in peer reviewed journals (national/International) by faculty and students	—	1	12				
Number of publications listed in International Database (For Eg: Web of Science, Scopus, Humanities International Complete, Dare Database - International Social Sciences Directory, EBSCO host, etc.)	—	—	8				
Monographs	—	—	—				
Chapter in Books	1	—	1				
Books Edited	—	—	—				
Books with ISBN/ISSN numbers with details of publishers	—	—	1				
Citation Index	—	—	—				
SNIP	—	—	—				
SJR	—	—	—				
Impact Factor	—	—	—				
hi-index	—	—	—				

20.	Areas of consultancy and income generated			Not Applicable
21.	Faculty as members in	National Committees	International Committees	Editorial Boards
		Nil	Nil	Nil
22.	Student Projects			
	Percentage of students who have done in-house projects including inter departmental/programme Percentage of students placed for projects in organizations outside the institution i.e.in Research laboratories/Industry/ other agencies		Submission of report of Project Work is mandatory for all B.Sc. (Honours) final year students	

23.	Awards/recognitions received by the faculty and students	Nil
-----	--	-----

24.	List of eminent academicians and scientists/visitors to the department	Nil
-----	--	-----

25.	Seminars/Conferences/Workshops organized & the source of funding		
(a)	National	One UGC-Sponsored National Seminar in the year 2011 jointly with the department of Commerce and in collaboration with Indian Accounting Association, Midnapore.	
(b)	International	Not Applicable	

26.	Student profile (programme/course wise)						
	Name of the Course/Programme (refer question No. 4)	Applications received	Selected	Enrolled		Pass Percentage	
				*M	*F		
	Undergraduate (Pass)	College does not keep such records at ‘Pass’ level					
	Undergraduate (Honours)	2011-12	211	10	3	6	100.00
		2012-13	203	20	11	7	100.00
		2013-14	101	24	9	6	75.00
		2014-15	99	23	7	7	100.00
	Postgraduate	Not on offer					

*M= Male, *F=Female

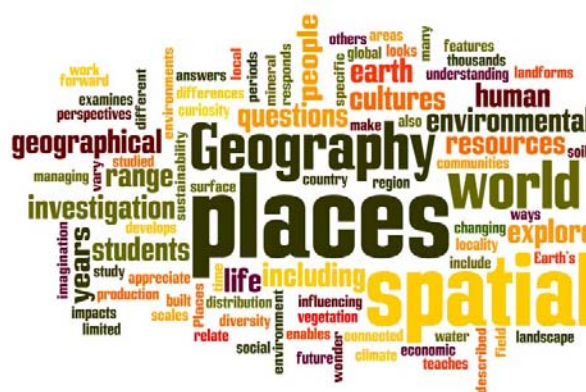
27.	Diversity of Students			
	Name of the Courses	% of students from the same state	% of students from the other state	% of the students from abroad
	Undergraduate (Pass)	100%	NIL	NIL
	Undergraduate (Honours)	100%	NIL	NIL
	Postgraduate	100%	NIL	NIL
28.	How many students have cleared national and state competitive examinations such as NET, SLET, GATE, Civil Services, Defence Services, etc. [verifiable data not available]			
29.	Student progression [verifiable data not available]			

Student progression	Against % enrolled
UG to PG	
PG to M.Phil.	
PG to Ph.D.	
Ph.D. to Post-Doctoral	
Employed	
— Campus selection	
— Other than campus recruitment	
Entrepreneurship/Self-employment	

30.	Details of Infrastructural Facilities	
	Library	Not Applicable
	Internet facilities for Staff & Students	Internet facility available in the Library with Wi-Fi connectivity
	Classrooms with ICT Facilities	One departmental laptop computer and one LCD projector (on sharing basis). Photocopier machine is available in the Central Library.
	Laboratories	Not Applicable

31.	Number of students receiving financial assistance from college, university, government or other agencies	College (Students' Aid Fund)	1
		Government(SC/ST/OBC/Minority Scholarships)	0
32.	Details on student enrichment programmes (special lectures / workshops/seminar) with external experts	Special Seminar Lectures were delivered by Dr. Debasish Mazumder of Bangabasi College on 10.12.2013, 19.12.2013 and 11.03.2014	
33.	Teaching methods adopted to improve student learning	<ul style="list-style-type: none">• Conventional method of teaching using chalk & talk and interactive discussion between the students and the teachers• Occasional use of electronic gadgets like LCD Projector	
34	Participation in Institutional Social Responsibility (ISR) and Extension activities	<ul style="list-style-type: none">• Students are encouraged in participating in Blood Donation Camps organized by Students' Union• Students are encouraged to participate in NCC/NSS activity of the college	
35.	SWOC analysis of the department and Future plans		
	<p><u>Strength</u></p> <ul style="list-style-type: none">• Three out of four sanctioned teaching posts are filled• Two faculty members possess M.Phil. degree• One teachers holds Ph.D. degree• One teacher has some experience of guiding Ph.D. students• Departmental teaching experience at the Honours level for more than four decades• Teachers' active involvements in multiple activities of the college, both Curricular and Co-curricular <p><u>Weakness</u></p> <ul style="list-style-type: none">• Progress of research activity has been slow• No Academic Seminar/Symposia held after the National Seminar in 2011 <p><u>Opportunity</u></p> <ul style="list-style-type: none">• Possibilities of re-introduction of Departmental Magazine may be explored• Departmental Seminars may be arranged in frequent intervals• More research options is seen on the card <p><u>Challenges</u></p> <ul style="list-style-type: none">• Sharp decline in demand for admission• Striking a balance between the work schedule related to Examination and teaching• Maintaining records of the individual and collective activities of the department in the face of non-admissibility of appropriate support staff		

Profile of the Geography Department



**The faculty members of the department of
Geography**

Geography caters for every aspect of our lives

1.	Name of the department	GEOGRAPHY
2.	Year of Establishment	2003
3.	Names of Programmes / Courses offered (UG, PG, M.Phil., Ph.D., Integrated Masters; Integrated Ph.D., etc.)	UG
4.	Names of interdisciplinary courses and the department/units involved	NIL
5.	Annual/ semester/choice based credit system (programme wise)	ANNUAL SYSTEM
6.	Participation of the department in the courses offered by other departments	NOT APPLICABLE
7.	Courses in collaboration with other universities, industries, foreign institutions, etc.	NOT APPLICABLE
8.	Details of courses/programmes discontinued (if any) with reasons	NOT APPLICABLE

9.	Number of Teaching posts
----	--------------------------

Category	Sanctioned	Filled
Professor*	—	—
Associate Professor**	—	—
Assistant Professor	1	1

*There is no post of Professor in Grant-In-Aid colleges

**Post of Assistant Professor is temporarily up graded to the Post of Associate Professor under Career Advancement Scheme (CAS)

10.	Faculty profile with name, qualification, designation, specialization, (D.Sc./D.Litt. Ph.D. / M. Phil. etc.,)
-----	---

Name	Qualification	Designation	Specialization	No. of Years of Experience	No. of Ph.D Students Guided in last 4 years
MOUMITA NANDI	M.A., M.PHIL	ASSISTANT PROFESSOR	ENVIRONMENT	8 M	NA
MADHUMITA CHAKRABARTY	M.SC.	ASSOCIATE PROFESSOR	GEOLOGY	25	NA
SUBHANIL GUHA	M.SC	FULL TIME TEACHER	GEOMORPHOLOGY	1Y9M	

11.	List of senior visiting faculty					NIL	
12.	Percentage of lectures delivered and practical classes handled (programme wise)by temporary faculty					54.00	
13.	Student-teacher ratio (programme-wise)					11.27	
14.	Number of Academic Support Staff (technical) and administrative staff; sanctioned and filled					Support Staff: 0 Administrative Staff: 0	
15.	Qualification of teaching faculty with	D.Sc	D.Litt	Ph.D	M.Phil	PG	
		0	0	0	1	1	
16.	Number of faculty with ongoing projects from	National Funding Agency		International Funding Agency			
		Grants received		Grants Received			
		NIL		NIL			
17.	Departmental projects funded by DST-FIST, UGC, DBT, ICSSR etc., and total grants received						
18.	Research Centre/facility recognized by the University				Not Applicable		

19.	Publications: Publication per faculty
-----	---------------------------------------

NAMES OF THE FACULTY MEMBERS	MOUMITA NANDI	MADHUMITA CHAKRABARTY	SUBHANIL GUHA				
Number of papers published in peer reviewed journals (national/International) by faculty and students	6	—	28				
Number of publications listed in International Database (For Eg: Web of Science, Scopus, Humanities International Complete, Dare Database - International Social Sciences Directory, EBSCO host, etc.)	—	—	12				
Monographs	—	—	—				
Chapter in Books	—	—	1				
Books Edited	—	—	—				
Books with ISBN/ISSN numbers with details of publishers	—	—	—				
Citation Index	—	—	11				
SNIP	—	—	—				
SJR	—	—	—				
Impact Factor	—	—	25.57				
hi-index	—	—	2				

20.	Areas of consultancy and income generated	Not Applicable
-----	---	----------------

21.	Faculty as members in	National Committees	International Committees	Editorial Boards
		NIL	NIL	NIL
22.	Student Projects			
	Percentage of students who have done in-house projects including inter departmental/programme			
	Percentage of students placed for projects in organizations outside the institution i.e.in Research laboratories/Industry/ other agencies			Not Applicable

23.	Awards/recognitions received by the faculty and students	NIL
-----	--	-----

24.	List of eminent academicians and scientists/visitors to the department	NIL
-----	--	-----

25.	Seminars/Conferences/Workshops organized & the source of funding	
(a)	National	NIL
(b)	International	NIL

26.	Student profile (programme/course wise)						
	Name of the Course/Programme (refer question No. 4)	Applications received		Selected	Enrolled		Pass Percentage
					*M	*F	
	Undergraduate (Honours)	2011-12	--	--	--	--	--
		2012-13	--	--	--	--	--
		2013-14	70	19	11	7	--
		2014-15	200	32	11	19	--
	Undergraduate (Pass)	College does not keep such records at 'Pass' level					
	Postgraduate	Not on offer					

*M= Male, *F=Female

27.	Diversity of Students			
	Name of the Courses	% of students from the same state	% of students from the other state	% of the students from abroad
	Undergraduate (Pass)	100%	NIL	NIL
	Undergraduate (Honours)	100%	NIL	NIL
	Postgraduate	100%	NIL	NIL

28.	How many students have cleared national and state competitive examinations such as NET,SLET,GATE, Civil Services, Defence Services, etc. (data not available)
-----	---

29.	Student progression (data not available)
-----	--

Student progression	Against % enrolled
UG to PG	
PG to M.Phil.	
PG to Ph.D.	
Ph.D. to Post-Doctoral	
Employed	
— Campus selection	
— Other than campus recruitment	
Entrepreneurship/Self-employment	

30.	Details of Infrastructural Facilities	
	Library	Not Applicable
	Internet facilities for Staff & Students	Internet facility available in the Library with Wi-Fi connectivity
	Classrooms with ICT Facilities	<ul style="list-style-type: none"> One dedicated Desk top Computer with Printer LCD Projector on sharing basis Photocopier machine is available in the Central Library

Laboratories	The Geography laboratory of Dinabandhu Andrews College is well equipped with modern geographical apparatus like dumpy level, altimeter, transit theodolite, prismatic compass, rain gauge, thermometer, barometer etc. along with maps, charts, samples of rocks and minerals and other accessories. With the help of computers of departmental laboratory students can learn Remote Sensing and GIS technology which is very much useful in modern application fields of the discipline. Six well designed tracing and drawing tables are provided to the students to carry out their lab based assignments.
--------------	---

31.	Number of students receiving financial assistance from college, university, government or other agencies	College (Students' Aid Fund)	14
		Government(SC/ST/OBC/Minority Scholarships)	0

32.	Details on student enrichment programmes (special lectures / workshops/seminar) with external experts	NIL
-----	---	-----

33.	Teaching methods adopted to improve student learning	<ul style="list-style-type: none"> • Conventional method of teaching using chalk & talk and interactive discussion between the students and the teachers • Occasional use of electronic gadgets like LCD Projector
-----	--	--

34	Participation in Institutional Social Responsibility (ISR) and Extension activities	<ul style="list-style-type: none"> • Students are encouraged in participating in Blood Donation Camps organized by Students' Union • Students are encouraged to participate in NCC/NSS activity of the college
----	---	--

35.	SWOC analysis of the department and Future plans
	<p><u>Strength</u></p> <ul style="list-style-type: none"> • Two well equipped laboratory • The department possesses one exclusive classroom-cum-laboratory • Modern Software as additional teaching tool • High demand ratio (Number of applicants/Number of seats) <p><u>Weakness</u></p> <ul style="list-style-type: none"> • Only one sanctioned full-time teaching post • No technical staff is admissible • Small number of books available in the Central Library • No departmental Library <p><u>Opportunity</u></p> <ul style="list-style-type: none"> • Students having B.Sc. degree with Honours in Geography are readily employable so far as teaching job is concerned at the Secondary and Higher Secondary levels

	<ul style="list-style-type: none"> Subject to the creation of teaching posts, department of Geography may thing to enhance the number of seats considerably <p>Challenge</p> <ul style="list-style-type: none"> Sustenance of academic service of high standard in the face of only a few full time teachers Restricting increased intake of students to manageable number in the face of national target of increasing Gross Enrolment Ratio
--	---

Sl. No.	Name of the Instruments	Use
1	Mirror Stereoscope (2)	To get 3D view from air photo
2	Pocket Stereoscope (6)	To get 3D view from air photo
3	Pocket North Compass (1)	To get north direction
4	Rotameter (4)	To measure curve distance on map
5	Brunton Compass (1)	To get north direction
6	Globe (1)	To get spherical view of the Earth
7	Weather Maps (8)	To get weather information
8	Wall Maps (8)	To get thematic information
9	Topo Sheets (180)	To get physical & cultural information of a region
10	Aerial Photos (12)	To get physical & cultural information of a region
11	Satellite Image (5)	To get physical & cultural information of a region
12	Planimeter (2)	To measure area
13	Wall Thermometer (1)	To measure temperature
14	Max. & Min. Thermometer (1)	To measure temperature
15	Dry Bulb Thermometer (1)	To measure temperature & moisture
16	Prismatic Compass (6)	To get north direction
17	Plane Table (1)	To measure area in a surface level
18	Dumpy Level (5)	To measure ground elevation
19	Transit Theodolite (4)	To measure ground elevation & vertical height
20	Clinometer (3)	To measure altitude
21	Chain Survey Set (1)	To measure distance & area
22	Chain Pins (100)	To measure distance
23	Abney Level (1)	To measure slope
24	GPS (2)	To get coordinate & elevation with time
25	Altimeter with Compass (1)	To measure altitude & direction
26	GIS Software (5)	To get maps of different layers



The team of young Geographers with their teachers



Survey work undertaken by the students of Geography



A direct effect of “HUDHUD” (Cyclone)



‘Gully Erosion’- a soil removal process



Use of well irrigation system in Araky, A.P.



Shifting Cultivation in Araku, A.P.

Profile of the Commerce Department



Faculty members of Commerce busy with academic pursuit



Persuasion in Commerce increases employability of the students

1.	Name of the department	COMMERCE
2.	Year of Establishment	1984
3.	Names of Programmes / Courses offered (UG, PG, M.Phil., Ph.D., Integrated Masters; Integrated Ph.D., etc.)	UG
4.	Names of interdisciplinary courses and the department/units involved	NIL
5.	Annual/ semester/choice based credit system (programme wise)	ANNUAL SYSTEM
6.	Participation of the department in the courses offered by other departments	NOT APPLICABLE
7.	Courses in collaboration with other universities, industries, foreign institutions, etc.	NOT APPLICABLE
8.	Details of courses/programmes discontinued (if any) with reasons	NOT APPLICABLE

9.	Number of Teaching posts
----	--------------------------

Category	Sanctioned	Filled
Professor*	—	—
Associate Professor**	—	—
Assistant Professor	5	5 (1 TEACHER RETD. IN NOVEMBER, 2015)

*There is no post of Professor in Grant-In-Aid colleges

**Post of Assistant Professor is temporarily up graded to the Post of Associate Professor under Career Advancement Scheme (CAS).

10.	Faculty profile with name, qualification, designation, specialization, (D.Sc./D.Litt. Ph.D. / M. Phil. etc.,)
-----	---

Name	Qualification	Designation	Specialization	No. of Years of Experience	No. of Ph.D Students Guided in last 4 years
DEBASISH PODDER	M.COM., M.PHIL., PH.D.	ASSOCIATE PROFESSOR	ACCOUNTING & FINANCE	32	NA
SANJUKTA NANDI (RETD. IN NOVEMBER, 2015)	M.SC., PH.D.	ASSOCIATE PROFESSOR	OPERATION RESEARCH & BIOMATHEMATICS	24	NA
MADHUMITA CHAKRABARTY	M.SC.	ASSOCIATE PROFESSOR	RESOURCE STUDIES	24	NA
ANUTAM PAUL	M.COM.	ASSOCIATE PROFESSOR	ACCOUNTING & FINANCE	23	NA
ASIM KUMAR MANNA	M.COM., M.PHIL., PH.D.	ASSOCIATE PROFESSOR	ACCOUNTING & FINANCE	17	NA
SK. ABIR HOSSAIN	M.COM.	*PTT	ACCOUNTING & FINANCE	5	NA
SWATI RAUT	M.SC.	*PTT	AGRICULTURAL ECONOMICS	5	NA
SUVRA BANERJEE	M.A.	*PTT	ECONOMETRICS	5	NA

*Government Approved Part Time Teacher

11.	List of senior visiting faculty					—	
12.	Percentage of lectures delivered and practical classes handled (programme wise)by temporary faculty					53%	
13.	Student-teacher ratio (programme-wise)					67.78	
14.	Number of Academic Support Staff (technical) and administrative staff; sanctioned and filled					Support Staff: 0 Administrative Staff: 0	
15.	Qualification of teaching faculty with	D.Sc	D.Litt	Ph.D	M.Phil	PG	
		0	0	3	0	2	
16.	Number of faculty with ongoing projects from	National Funding Agency		International Funding Agency			
		Grants received		Grants Received			
		NIL		NIL			
17.	Departmental projects funded by DST-FIST;UGC,DBT,ICSSR etc, and total grants received				NIL		
18.	Research Centre/facility recognized by the University				NIL		

19.	Publications: Publication per faculty
-----	---------------------------------------

NAMES OF THE FACULTY MEMBERS	DEBASISH PODDAR	SANJUKTA NANDI (Retd. on 30.11.2015)	MADHUMITA CHAKRABARTY	ANUTAM PAUL	ASIM KUMAR MANNA		
Number of papers published in peer reviewed journals (national/International) by faculty and students	—	—	—	—	—		
Number of publications listed in International Database (For Eg: Web of Science, Scopus, Humanities International Complete, Dare Database - International Social Sciences Directory, EBSCO host, etc.)	—	—	—	—	—		
Monographs	—	—	—	—	—		
Chapter in Books	—	—	—	—	—		
Books Edited	—	—	—	—	—		
Books with ISBN/ISSN numbers with details of publishers	—	—	—	—	—		
Citation Index	—	—	—	—	—		
SNIP	—	—	—	—	—		
SJR	—	—	—	—	—		
Impact Factor	—	—	—	—	—		
hi-index	—	—	—	—	—		

20.	Areas of consultancy and income generated	Not Applicable
-----	---	----------------

21.	Faculty as members in	National Committees	International Committees	Editorial Boards
		Nil	Nil	Nil
22.	Student Projects Percentage of students who have done in-house projects including inter departmental/programme Percentage of students placed for projects in organizations outside the institution i.e.in Research laboratories/Industry/ other agencies			Submission of report of Project Work is mandatory for all B.Com. (Honours) final year students

23.	Awards/recognitions received by the faculty and students	Nil
-----	--	-----

24.	List of eminent academicians and scientists/visitors to the department	NIL
-----	--	-----

25.	Seminars/Conferences/Workshops organized & the source of funding		
	(a)	National	One UGC-sponsored National Seminar organized by the department of Commerce and Economics in collaboration with Indian Accounting Association, Midnapore in 2011
	(b)	International	NIL

26.	Student profile (programme/course wise)					
	Name of the Course/Programme (refer question No. 4)	Applications received		Selected	Enrolled *M *F	Pass Percentage
	Undergraduate (Pass)	2011-12	1170	112	86 25	50.41
		2012-13	1125	133	98 23	67.16
		2014-15	690	208	136 62	52.70
		2015-16	710	202	154 45	24.24
	Undergraduate (Honours)	2011-12	3124	170	118 51	97.79
		2012-13	2864	196	132 62	97.09
		2014-15	1738	264	143 73	69.62
		2015-16	1423	251	130 72	78.92
	Postgraduate	Not on offer				

*M= Male, *F=Female

27.	Diversity of Students			
	Name of the Courses	% of students from the same state	% of students from the other state	% of the students from abroad
	Undergraduate (Pass)	100%	NIL	NIL
	Undergraduate (Honours)	100%	NIL	NIL
	Postgraduate	100%	NIL	NIL
28.	How many students have cleared national and state competitive examinations such as NET,SLET,GATE, Civil Services, Defence Services, etc.		Verifiable data not available	

29.	Student progression [verifiable data not available]
-----	---

Student progression	Against % enrolled
UG to PG	
PG to M.Phil.	
PG to Ph.D.	
Ph.D. to Post-Doctoral	
Employed	
— Campus selection	
— Other than campus recruitment	
Entrepreneurship/Self-employment	

30.	Details of Infrastructural Facilities	
	Library	The Departmental library contains 495 books for the use of students and teachers
	Internet facilities for Staff & Students	Internet facility available in the Library with Wi-Fi connectivity

Classrooms with ICT Facilities	Departmental Computer, Perinter and one LCD projector (on sharing basis). Photocopier machine is available in the Central Library.
Laboratories	Not Applicable

31.	Number of students receiving financial assistance from college, university, government or other agencies	College (Students' Aid Fund)	25
		Government(SC/ST/OBC/Minority Scholarships)	07

32.	Details on student enrichment programmes (special lectures / workshops/seminar) with external experts	Nil
-----	---	-----

33.	Teaching methods adopted to improve student learning	<ul style="list-style-type: none"> Conventional method of teaching (Class lecture, interaction, board works etc) and interactive discussion between the teacher and the students Occasional use of LCD projector
-----	--	--

34	Participation in Institutional Social Responsibility (ISR) and Extension activities	<ul style="list-style-type: none"> Students are encouraged in participating in Blood Donation Camps organized by Students' Union Students are encouraged to participate in NCC/NSS activity of the college.
----	---	---

35.	SWOC analysis of the department and Future plans
	<p><u>Strength</u></p> <ul style="list-style-type: none"> • Highly qualified faculty members • Three out of four teachers hold Ph.D. degree; one teachers has recently submitted Ph.D. thesis • Very high level of demand for admission to both Honours and General Courses • Involvement of the departmental teachers in various activities of the college, both curricular and co-curricular • Classes on Information Technology are held in the Computer Centre of the college which is well equipped with all modern ICT facilities <p><u>Weakness</u></p> <ul style="list-style-type: none"> • No seminar organized by the department after 2011 • Restricted use of modern teaching methods • Non availability of Technical/Clerical Staff in the department <p><u>Opportunities</u></p> <ul style="list-style-type: none"> • Availability of good students • Subject to the appointment of new faculty against the post vacated by Dr. Sanjukta Nandi on 30.11.2015, department may think of widening the course options • New ideas likely to emerge in the young minds of final year students in course of their project work <p><u>Challenges</u></p> <ul style="list-style-type: none"> • Restricting increased intake of students to manageable number in the face of national target of increasing Gross Enrolment Ratio • Finding time by the faculty members for doing all kind of the clerical works

